



7-22-14

Handwritten signature: Wade Morgan



SADDLE CREEK

COMPREHENSIVE SIGN PLAN - REGULATORY SIGNS



SADDLE CREEK

13-1438 RB

Sheet 1 of 25

SADDLE CREEK - PERMIT

7508 POPLAR AVE.
GERMANTOWN, TN
38138

Arch. Rep. STAN MACRUM
Contractor JAMIE MACRUM

Designer P. AGUIAR

Date 11/16/13

Client _____
Sales _____
Estimating _____
Art _____
Landlord _____
Engineer/Architect _____

PERMITS: UPDATED ALL SIGNAGE ELEMENTS. REDESIGNED TENANT SIGNAGE AREA. COPY OF SIGN PLAN IS ARCHIVED WITH PERMIT. ALL REGULATORY SIGNS TO BE CONFORMANT WITH ALL REGULATORY AGENCIES. ALL REGULATORY SIGNS TO BE CONFORMANT WITH ALL REGULATORY AGENCIES. ALL REGULATORY SIGNS TO BE CONFORMANT WITH ALL REGULATORY AGENCIES.

Chandler Signs

2881 Dover Hwy Dallas, TX 75204
214-343-1000 Fax 214-343-0844

17280 Dow Perry, P.O. Box The Woodlands, TX 77380
281-349-5099 Fax 281-349-8724

833 Heather Avenue, P.O. Box Louisville, KY 40203
502-476-9872 Fax 502-476-9872

3004 East 98th Street Sarasota, FL 34237
941-438-1188 Fax 941-438-1188

37 Mulberry Park Court Huntsville, AL 35894
256-891-7000 Fax 256-891-0726

P.O. Box 100 Norfolk, VA 23510
757-693-0999 Fax 757-693-0932

1200 Park Center Drive, Unit C White, GA 31881
706-877-7900 Fax 706-868-0922

FINAL ELECTRICAL CONNECTION BY CUSTOMER



TENANT SIGNAGE CRITERIA

Project Description:

Saddle Creek is a first class open-air retail development that preserves the essence of its natural surroundings. Saddle Creek will transcend conventional mixed-use developments; it will be constantly alive with activity and commerce. It will contain approximately 85,000 square feet of inspired mixed-use space.

Purpose of Tenant Signage Design Criteria:

This Signage Design Criteria is provided to guide designers, architects, and Tenants in the development of Tenant Identity signs at Saddle Creek

A. The objectives are:

- To generate varied and creative Tenant signage through application of imaginative design treatments and distinctive logos and typographies.
- To establish signage as a design element that contributes to a "shopping district" environment unique to Saddle Creek.
- To provide standards of acceptability for signs in order to facilitate the review and approval process.

B. A map of designated areas is located on the Tenant Signage Zoning Plan. Tenants and their designers are to refer to that map and select a combination of at least two sign types, and no more than three, from the designated district assigned to their store.

Tenant Signage Within Saddle Creek

All Tenants are encouraged to push the boundaries and design exciting signage. Every signage submission approval is at the discretion of the Landlord and the Landlord may approve signage that exceeds the limits listed in the following criteria on a case-by-case basis and compliant to local code. Tenants are required to use LED type lighting in their signage where the lighting source will be hidden from view.

The Tenant signage for Saddle Creek is divided into two (2) distinct "district" to assist the Tenant in choosing the appropriate signage type, location, and quantity for their identity. All stores and their corresponding elevations for within a particular district. Please refer to the included Tenant Zoning Plan for the location.

All tenants in each district must abide by signage height restrictions, reference sheet 3 of 36

Tenant Signage Allowed Within Saddle Creek:

The Tenants in each district must have certain required sign types. They are listed below. In addition to the two required sign types, Tenants are allowed to have signs selected from the "optional" signage in the indicated areas. A maximum selection of three sign types are allowed per Tenant, as noted in the zone descriptions below.

If a tenant has two distinct retail concepts and a separate entrance for each concept, they are allowed a sign above each entrance. The two concepts will be viewed independantly and linear foot of storefront will be calculated based upon demising wall or other significant interior transition between the two concepts.

Variations away from these designated areas need approval from the Landlord prior to being submitted to the City for permit. The maximum allowable square footage area of each sign is to be determined based on the linear frontage of the storefront, and it's location in SaddleCreek.

Note: A separate sign permit is required from the City of Germantown prior to installation. All signs required to be reviewed & approved by the City of Germantown Design Review Commission.

A. Town Center District Signage Guidelines:

The Town Center District is premium retail in an inviting environment characterized by quality materials, soft light, natural materials and external illumination. A sense of quality is reinforced through a careful attention to scale.

The primary viewing of the Tenant signage will be from the pedestrian areas. As such, Tenant signage should respond to the appropriate scale. Tenant logos will be encouraged and are recommended. To ensure variety in the district, adjacent Tenants will be required to use different sign types, materials and colors.

Elevations demonstrated are for presentation purposes, final elevations may differ.

Final locations of signs and signage areas are for visual purposes. All final signage sizes & locations are subject to Landlord's discretion.

Allowable Sign Types:

- Primary Signage: REQUIRED**
 - Reverse pan channel halo lit individual dimensional letters with LED type lighting – OR –
 - Dimensional letters, externally illuminated with projecting fixtures
i.e. goose neck – OR –
 - Canopy sign
- Secondary Signage: REQUIRED**
 - Blade sign
- Optional Signage:**
 - Wall mounted plaques
 - Identity on valance of awning

Wall Signs

Tenants are allowed one wall sign. An additional wall sign is allowed on a wall facing a public street – OR – customer parking lot and containing a major entrance.

- Tenants signs must fit within designated sign band areas and are subject to review.
- The Maximum area is 1.5 Square Feet for each Linear Foot of Frontage.
- The Maximum Width of the Sign is 75% of the Lease Space.
- The Maximum Area of the Sign is 75 Square Feet per Tenant Storefront Face.

MAXIMUM SIGN HEIGHT ALLOWED:

TENANT SPACE : 0 - 2500 = 24' MAX. SIGN HEIGHT
 TENANT SPACE : 2501 - 5000 = 30' MAX. SIGN HEIGHT
 TENANT SPACE : 5001 - ABOVE = 36' MAX. SIGN HEIGHT

SADDLE CREEK

13-1438 RB	
Bk 1	2 of 25
SADDLE CREEK - PERMIT	
7508 POPLAR AVE. GERMANTOWN, TN 37138	
App. No.	STAN MACRUM
Designer	JAMIE MACRUM
Designer	P. AGUIAR
Date	11/18/13
Client	
Status	
Estimating	
Art	
Landlord	
Engineering	
<p>ALL PROPOSED SIGNAGE MUST BE SUBMITTED TO THE CITY OF GERMAN TOWN FOR REVIEW AND APPROVAL PRIOR TO INSTALLATION. ALL SIGNAGE MUST BE INSTALLED IN ACCORDANCE WITH THE CITY OF GERMAN TOWN SIGNAGE ORDINANCE. THE CITY OF GERMAN TOWN RESERVES THE RIGHT TO APPROVE OR DENY ANY SIGNAGE THAT DOES NOT COMPLY WITH THE CITY OF GERMAN TOWN SIGNAGE ORDINANCE. THE CITY OF GERMAN TOWN RESERVES THE RIGHT TO APPROVE OR DENY ANY SIGNAGE THAT DOES NOT COMPLY WITH THE CITY OF GERMAN TOWN SIGNAGE ORDINANCE. THE CITY OF GERMAN TOWN RESERVES THE RIGHT TO APPROVE OR DENY ANY SIGNAGE THAT DOES NOT COMPLY WITH THE CITY OF GERMAN TOWN SIGNAGE ORDINANCE.</p>	

Chandler Signs

2000 Moore Way
214-940-2000 Dallas, TX 75221
Fax 214-940-0944

1720 W. Loop West, Ste 200
214-940-0944 Dallas, TX 75243
Fax 214-940-0774

6143 Middle Springs, Ste 200
281-378-2877 Lenoirville, TN 37086
Fax 603-643-0123

2880 South 400, 4000 North Circle
863-423-1180 Palm Bay, FL 32909
Fax 888-239-1266

27 Waterford Park Court
888-413-2000 Palm Bay, FL 32909
Fax 888-413-2000

P.O. Box 133, 204 West Drive
335-913-9999 Prichard, AL 36070
Fax 335-913-4338

2022 North Dade Drive, Ste 10
714-940-7000 Miami, FL 33186
Fax 714-940-7513

FINAL ELECTRICAL CONNECTION BY CUSTOMER

13-1438 R8	
Sheet	3 of 25
SADDLE CREEK - PERMIT	
7508 POPLAR AVE. GERMANTOWN, TN 38188	
Act. Rep.	STAN MACRUM
Designer	JAMIE MACRUM
Drawn by	P. AGUIAR
Date	11/18/13
Client	
Sales	
Estimating	
Ac.	
Landmark	
Engineering	
<p>REVISIONS: LISTED ALL MATERIALS EXCEPT REPAIRED DAMAGE AREAS. REPAIRS SHALL BE IN ACCORDANCE WITH THE CITY OF SADDLE CREEK SPECIFICATIONS.</p> <p>NOTIFICATION: PROVIDED PER CUSTOMER PROVIDED RECORDS INCLUDING CHANGED TENANT SIGNAGE. NONE.</p> <p>NOTIFICATION: LISTED ALL MATERIALS AND SHOWED SAMPLE COPY WITH CONFORMANCE OF CALCULATED SIGNAGE ALLOWED.</p> <p>NOTIFICATION: LISTED OPTION AS PER SIGNAGE. SIGNAGE SHALL BE IN ACCORDANCE WITH THE CITY OF SADDLE CREEK SPECIFICATIONS. SIGNAGE SHALL BE IN ACCORDANCE WITH THE CITY OF SADDLE CREEK SPECIFICATIONS. SIGNAGE SHALL BE IN ACCORDANCE WITH THE CITY OF SADDLE CREEK SPECIFICATIONS. SIGNAGE SHALL BE IN ACCORDANCE WITH THE CITY OF SADDLE CREEK SPECIFICATIONS.</p> <p>NOTIFICATION: LISTED OPTION AS PER SIGNAGE. SIGNAGE SHALL BE IN ACCORDANCE WITH THE CITY OF SADDLE CREEK SPECIFICATIONS. SIGNAGE SHALL BE IN ACCORDANCE WITH THE CITY OF SADDLE CREEK SPECIFICATIONS. SIGNAGE SHALL BE IN ACCORDANCE WITH THE CITY OF SADDLE CREEK SPECIFICATIONS.</p> <p>NOTIFICATION: LISTED OPTION AS PER SIGNAGE. SIGNAGE SHALL BE IN ACCORDANCE WITH THE CITY OF SADDLE CREEK SPECIFICATIONS. SIGNAGE SHALL BE IN ACCORDANCE WITH THE CITY OF SADDLE CREEK SPECIFICATIONS. SIGNAGE SHALL BE IN ACCORDANCE WITH THE CITY OF SADDLE CREEK SPECIFICATIONS.</p>	
<p>Chandler Signs</p> <p>2004 Mainway Way, Dallas, TX 75238 214-440-3400 Fax 214-440-3400</p> <p>17219 Ben Franklin, Ste 200, San Antonio, TX 78232 210-440-3400 Fax 210-440-3400</p> <p>612 Mainway, Ste 200, Lubbock, TX 79404 806-440-3400 Fax 806-440-3400</p> <p>3885 South 10th Street, Irving, TX 75039 972-440-3400 Fax 972-440-3400</p> <p>27 Mainway, Ste 200, Dallas, TX 75238 214-440-3400 Fax 214-440-3400</p> <p>101 Mainway, Ste 200, Dallas, TX 75238 214-440-3400 Fax 214-440-3400</p> <p>101 Mainway, Ste 200, Dallas, TX 75238 214-440-3400 Fax 214-440-3400</p>	
<p>FINAL ELECTRICAL CONNECTION BY CUSTOMER</p>	

C. Out Parcel District Signage Guidelines

The out-parcel zone is comprised of mainly freestanding Tenants. The energy of the signage will help draw the customer to the out-parcel perimeter locations, thus the need for vibrant colors dimensional signage and multiple signs.

Allowable Sign Types:

1. Primary Signage: REQUIRED

- Reverse pan channel halo lit individual dimensional letters with LED type lighting - OR -
- Dimensional letters, externally illuminated with projecting fixtures i.e. goose neck
- Canopy sign

2. Secondary Signage: REQUIRED

- Blade Sign

3. Optional Signage:

- Wall mounted plaques
- Identify on valance of awning

Allowable area for primary sign on front elevation is based upon below calculations.

Signage Details and Specifications:

A. Address Signage:

The suite number or building address needs to be applied to the exterior façade as determined by the Landlord and local jurisdiction. The numbers must be visible to the street and color contrast to the façade for visibility. Please refer to design drawing for specifications.

- Numbers to be dimensional metal.
- Out-parcel Tenants primary building address numerals to be 12 inches high, with rear door address 6 inches in height.
- All other Tenants to have a minimum of 6 inches in letter height.
- 1/4" Aluminum flat cut-out. Color TBD by landlord.
- Flush to the architecture.
- Mounted on the pier closest to the entrance.
- Vinyl letters applied to glass not allowed.
- Address signs are required for each Tenant and not included in square area calculations or not counted towards the three-maximum sign limit.

B. Blade Signs:

A double-sided sign mounted perpendicular to the building facade and suspended on a decorative metal bracket. Usually placed near the storefront entrances.

- Each tenant is required to have one double-faced hanging sign per public/customer entrance.
- The creative use of logo shapes is encouraged in the design of the blade sign.
- Tenants are encouraged to utilize a variety of colors and graphic elements along with typestyle to create a whimsical and energetic signing solution. Painted flat forms layered to give a 3-dimensional effect are encouraged.
- Blade signs are to be fabricated of painted metal only. Sentra and acrylic are not allowable materials for blade signs.
- Signs are to be wall mounted from a metal bracket, or suspended from the canopy with metal supports. If suspended, sign to be centered within the walkway.
- Placement to be reviewed with consideration of all adjacent signs and will be free from visual obstruction. The sign will not be located less than 4' to the adjacent Tenant's blade sign.
- External illumination with Landlord approved fixtures is encouraged.
- Signs to be mounted with minimum of 8" of clearance from finished floor.
- Signs to project a maximum of 4', inclusive of bracket, not to exceed 6 sq. feet, blade sign square footage will not count towards tenant overall allowable area of signage.
- Trade name or logo only, no taglines, slogans, products, services, or advertising allowed. centered within the walkway.

C. Canopy Signs

Made from metal, the canopy projects perpendicular from the storefront facade above the entrance door and/or display windows and acts as protection against the elements. The name and/or logo of the Tenant is applied to the canopy with individual dimensional letters either on the face of the canopy, resting on the top of the canopy, or suspended below the canopy. Canopy sign size will be limited to the size of the canopy and subject the Landlord approval.

- Letters to be non-illuminated.
- Letters to be made of cut out metals.

D. Corner Treatments:

- When the Tenant occupies a corner store location and there is a corner entry / architectural feature, Tenant may locate primary identity over the corner entry or a sign on each side.
- Vertical Marquees are encouraged.

E. Interior Signage:

- Signage is to be oriented to and viewed from the interior of the store only.
- Signage, mounted inside the store, viewed from the pedestrian walkway is prohibited.

F. Menu Boards:

- Menu boards to be mounted directly next to main customer entrance doors.
- Menus are to be enclosed in weatherproof, metal enclosure, and are to be a maximum of four square feet in size.
- Menus can be illuminated by a concealed light source integrated into the design of the enclosure.
- Back-lit menu boards are prohibited.

G. Operational Signs:

Operational signage indicating hours of operation, telephone numbers, website addresses, specialty rules and regulations is specific to each Tenant. Operational signs are required. No tag lines or slogans allowed.

- Maximum Letter height of 3/4".
- Mounted to interior surface of glass, on or adjacent to entrance door and mounted no higher than 36".
- Total area of sign shall not exceed three (3) square feet.



13-143B R8	
Sheet 4 of 25	
SADDLE CREEK - PERMIT	
7508 POPLAR AVE. GERMANTOWN, TN 38138	
Inst. R./P. Designer	STAN MACRUM JAMIE MACRUM
Designer	P. AGUIAR
DC#	11/16/19
Client	
Series	
Estimating	
Art	
Landscape	
Engineering	
<p>NOTES: 1. VERIFY ALL MEASUREMENTS. 2. VERIFY ALL MATERIALS. 3. VERIFY ALL FINISHES. 4. VERIFY ALL COLORS. 5. VERIFY ALL DIMENSIONS. 6. VERIFY ALL SPACING. 7. VERIFY ALL CLEARANCES. 8. VERIFY ALL HEIGHTS. 9. VERIFY ALL WEIGHTS. 10. VERIFY ALL LOADS. 11. VERIFY ALL VIBRATIONS. 12. VERIFY ALL WEATHERING. 13. VERIFY ALL CORROSION. 14. VERIFY ALL SAFETY. 15. VERIFY ALL ACCESSIBILITY. 16. VERIFY ALL SIGNAGE. 17. VERIFY ALL LIGHTING. 18. VERIFY ALL SOUNDING. 19. VERIFY ALL TASTES. 20. VERIFY ALL SMELLS. 21. VERIFY ALL TOUCHES. 22. VERIFY ALL FEELS. 23. VERIFY ALL TASTES. 24. VERIFY ALL SMELLS. 25. VERIFY ALL TOUCHES. 26. VERIFY ALL FEELS.</p>	
<p>Chandler Signs</p> <p>2000 Poplar Way 249-449-3989</p> <p>1719 Blue Poplar, Box 300 249-449-3984</p> <p>411 Saddle Creek, Box 200 865-423-5138</p> <p>2800 South Hill Plaza Circle 865-423-5138</p> <p>37 Woodland Park Blvd 865-423-5138</p> <p>1000 Poplar Way 249-449-3989</p> <p>1000 Poplar Way, Unit 2 249-449-3989</p> <p>Memphis, TN 38124 Tel: 901-454-4644 Fax: 901-454-4644</p> <p>Memphis, TN 38124 Tel: 901-454-4644 Fax: 901-454-4644</p> <p>Memphis, TN 38124 Tel: 901-454-4644 Fax: 901-454-4644</p> <p>Memphis, TN 38124 Tel: 901-454-4644 Fax: 901-454-4644</p>	
<p>FINAL ELECTRICAL CONNECTION BY CUSTOMER</p>	

H. Storefront Signs:

Storefront signs are not to exceed 75% of the linear length of the storefront or designated sign band.

1. Individual letters – Reverse pan channel – halo illumination with LED type lighting
 - a. Reverse channel letters are to be of painted metal.
 - b. All seams are to be welded and ground smooth.
 - c. Letters are to have a clear Plexiglas backer.
 - d. Channel depth to be no more than 4".
 - e. Letter channels are to be peg mounted with 1" minimum and 2" maximum from face of wall.
 - f. Peg mounts are to be threaded anchor bolts with round cover sleeves and painted the color of the fascia.
 - g. Mounting clips are prohibited.
2. Individual letters - Open pan channel – exposed neon illumination
 - a. Open pan channel letterforms are to be of painted metal.
 - b. All seams to be welded and ground smooth.
 - c. Inside of channel letterforms are to be painted a contrasting color from the building color.
 - d. Neon tubes are to be double row or adequate number of rows to illuminate channel form.
 - e. All neon fasteners, tube stands, mounts, and crossovers are to be painted to match inside of channel letterform.
 - f. Letter channel returns are to be 4" maximum deep.
 - g. Top surface of neon is to be mounted flush with front edges of returns.
3. Individual letters - External illumination
 - a. External illumination to be provided by a separate light fixture(s) of a design that is complimentary to the overall sign design concept and the building architecture.
 - b. Fixtures with arm extensions or gooseneck extensions are encouraged.
 - c. Pre-manufactured square or rectangle light boxes/bars are not allowed.
 - d. Individual letters to be at least 1" in thickness of metal. Letter thickness is subject to Landlord approval and based on thickness-to-height proportion.
 - e. If peg-mounted, the individual letters are to be peg mounted minimum 1 1/2" from face of wall.
 - f. All light fixture designs are to be submitted to the Landlord for approval prior to purchase and installation.

I. Wall Mounted Plaques:

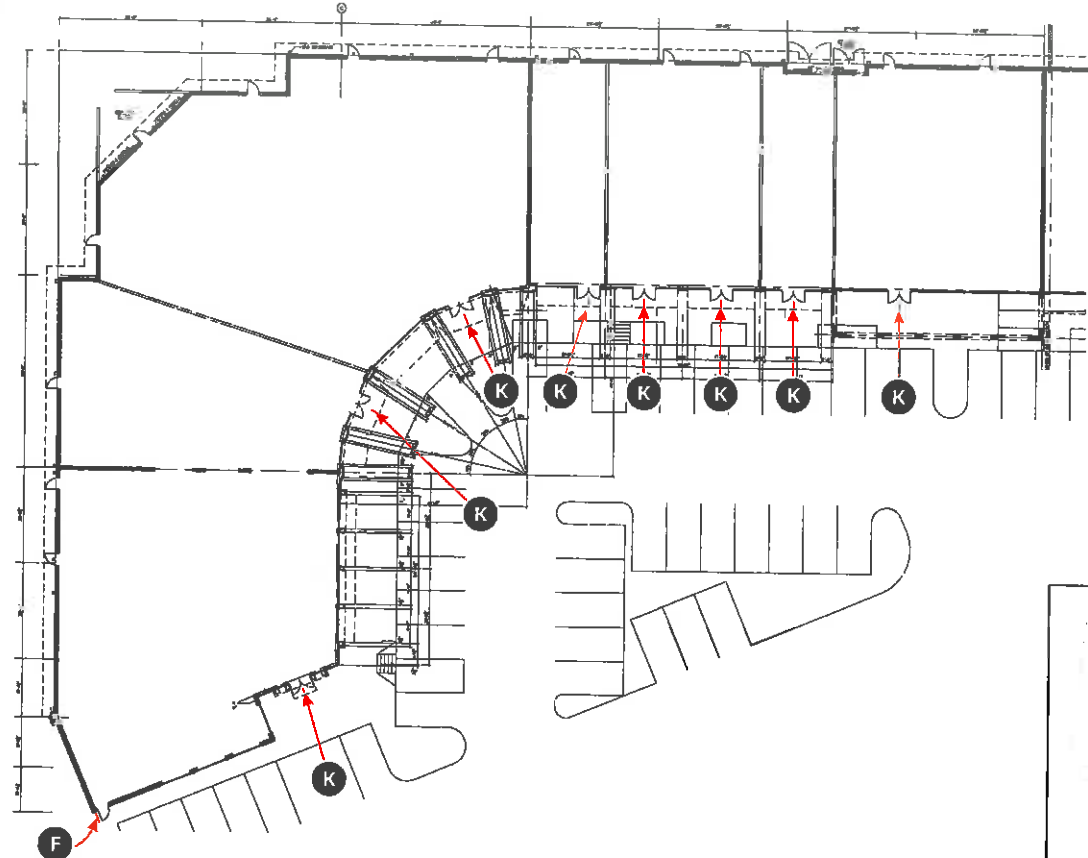
1. Wall-mounted plaques with concealed fasteners or exposed fasteners designed as a feature treatment approved by Landlord.
2. Allowable materials are cast or built-up metal.
3. Non-illuminated or externally illuminated only.
4. Size to be submitted for approval.
5. Location to be adjacent to entry doors and submitted for approval.
6. No taglines, slogans, service or product descriptions allowed in text.

Prohibited Sign Types:

The following sign types and finishes shall be prohibited at Saddle Creek. Any signs prohibited by the City of Germantown Sign Ordinance (except for those specifically allowed under this comprehensive plan), are also prohibited from Saddle Creek.

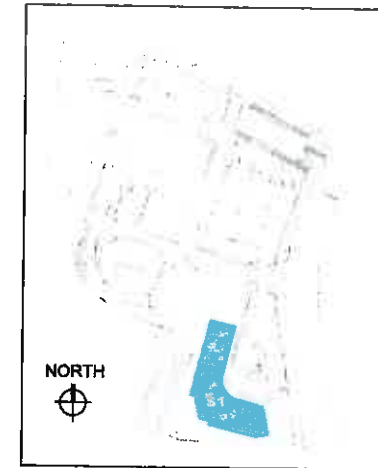
1. Illuminated sign boxes.
2. Interior signage meant to be viewed from the exterior of the store by the pedestrian.
3. Signs with tag lines, slogans, phone numbers, products, service description, or advertising.
4. Illuminated canopies and awnings.
5. Signs with exposed conduit, junction boxes, transformers visible lamps, tubing, or neon crossovers of any type.
6. Rotating, animated and flashing signs.
7. Pole signs and other signs with exposed structural supports not intended as a design element except for code-required signs.
8. Vehicle signs, except for the identification of a business enterprise or advertisement upon a vehicle used primarily for business purposes, provided the identification is affixed in a permanent manner.
9. Signs attached, painted on, or otherwise affixed to trees, other living vegetation and landscaping or natural materials.
10. Signs attached, painted or otherwise affixed to awnings, tents or umbrellas, however, the Landlord may permit such signs in conjunction with special design review.
11. Balloons and inflatable signs.
12. Any signs including freestanding signs advertising the availability of employment opportunities.
13. Signs, which emit sound, odor or visible matter.
14. Signs, which bear or contain statements, words or pictures of an obscene, pornographic or immoral character, as deemed so by the Landlord.
15. Fluorescent or reflective sign colors.
16. Simulated materials, i.e. wood grained plastic laminate, wall covering, paper, cardboard or foam.
17. Signs made with plastic, Lavan, or acrylic, translucent or opaque. Clear faces are allowed if used to protect neon.
18. Back plates behind signage are prohibited.
19. Signage, which contains visible sign company name.
20. Temporary signs, posters, notices, announcements, or advertisements, including posting of credit card logos.

S1



FLOOR PLAN - BUILDING 'S1'

SCALE: 1/32" = 1'-0"



KEY MAP

13-1436 R8	
Sheet: 6 of 25	
SADDLE CREEK - PERMIT	
7508 POPLAR AVE. GERMANTOWN, TN 38138	
Asst. Rep.	STAN MACRUM
Contractor	JAMIE MACRUM
Designer	P. AGUIAR
Date	11/16/13
Client	
Sales	
Estimating	
Asst.	
Landlord	
Engineering	

REVISIONS: INDICATE ALL REVISIONS IN RED. THE REVISED TOLERANCE SHALL BE AS PER THE PERMITS AS SHOWN IN THESE NOTES. ALL DIMENSIONS ARE TO FACE UNLESS OTHERWISE SPECIFIED.

REVISIONS:

- REV-B: DELETED ALL DIMENSIONS AND PROVIDED DIMENSIONS WITH CORRECTIONS OF CALCULATED DIMENSIONS ALLOWED.
- REV-C: APPLIED ON FLOOR PLAN AND PROVIDED DIMENSIONS WITH CORRECTIONS OF CALCULATED DIMENSIONS ALLOWED.
- REV-D: APPLIED ON FLOOR PLAN AND PROVIDED DIMENSIONS WITH CORRECTIONS OF CALCULATED DIMENSIONS ALLOWED.
- REV-E: APPLIED ON FLOOR PLAN AND PROVIDED DIMENSIONS WITH CORRECTIONS OF CALCULATED DIMENSIONS ALLOWED.
- REV-F: APPLIED ON FLOOR PLAN AND PROVIDED DIMENSIONS WITH CORRECTIONS OF CALCULATED DIMENSIONS ALLOWED.
- REV-G: APPLIED ON FLOOR PLAN AND PROVIDED DIMENSIONS WITH CORRECTIONS OF CALCULATED DIMENSIONS ALLOWED.
- REV-H: APPLIED ON FLOOR PLAN AND PROVIDED DIMENSIONS WITH CORRECTIONS OF CALCULATED DIMENSIONS ALLOWED.
- REV-I: APPLIED ON FLOOR PLAN AND PROVIDED DIMENSIONS WITH CORRECTIONS OF CALCULATED DIMENSIONS ALLOWED.
- REV-J: APPLIED ON FLOOR PLAN AND PROVIDED DIMENSIONS WITH CORRECTIONS OF CALCULATED DIMENSIONS ALLOWED.
- REV-K: APPLIED ON FLOOR PLAN AND PROVIDED DIMENSIONS WITH CORRECTIONS OF CALCULATED DIMENSIONS ALLOWED.
- REV-L: APPLIED ON FLOOR PLAN AND PROVIDED DIMENSIONS WITH CORRECTIONS OF CALCULATED DIMENSIONS ALLOWED.
- REV-M: APPLIED ON FLOOR PLAN AND PROVIDED DIMENSIONS WITH CORRECTIONS OF CALCULATED DIMENSIONS ALLOWED.
- REV-N: APPLIED ON FLOOR PLAN AND PROVIDED DIMENSIONS WITH CORRECTIONS OF CALCULATED DIMENSIONS ALLOWED.
- REV-O: APPLIED ON FLOOR PLAN AND PROVIDED DIMENSIONS WITH CORRECTIONS OF CALCULATED DIMENSIONS ALLOWED.
- REV-P: APPLIED ON FLOOR PLAN AND PROVIDED DIMENSIONS WITH CORRECTIONS OF CALCULATED DIMENSIONS ALLOWED.
- REV-Q: APPLIED ON FLOOR PLAN AND PROVIDED DIMENSIONS WITH CORRECTIONS OF CALCULATED DIMENSIONS ALLOWED.
- REV-R: APPLIED ON FLOOR PLAN AND PROVIDED DIMENSIONS WITH CORRECTIONS OF CALCULATED DIMENSIONS ALLOWED.
- REV-S: APPLIED ON FLOOR PLAN AND PROVIDED DIMENSIONS WITH CORRECTIONS OF CALCULATED DIMENSIONS ALLOWED.
- REV-T: APPLIED ON FLOOR PLAN AND PROVIDED DIMENSIONS WITH CORRECTIONS OF CALCULATED DIMENSIONS ALLOWED.
- REV-U: APPLIED ON FLOOR PLAN AND PROVIDED DIMENSIONS WITH CORRECTIONS OF CALCULATED DIMENSIONS ALLOWED.
- REV-V: APPLIED ON FLOOR PLAN AND PROVIDED DIMENSIONS WITH CORRECTIONS OF CALCULATED DIMENSIONS ALLOWED.
- REV-W: APPLIED ON FLOOR PLAN AND PROVIDED DIMENSIONS WITH CORRECTIONS OF CALCULATED DIMENSIONS ALLOWED.
- REV-X: APPLIED ON FLOOR PLAN AND PROVIDED DIMENSIONS WITH CORRECTIONS OF CALCULATED DIMENSIONS ALLOWED.
- REV-Y: APPLIED ON FLOOR PLAN AND PROVIDED DIMENSIONS WITH CORRECTIONS OF CALCULATED DIMENSIONS ALLOWED.
- REV-Z: APPLIED ON FLOOR PLAN AND PROVIDED DIMENSIONS WITH CORRECTIONS OF CALCULATED DIMENSIONS ALLOWED.

Chandler Signs

11810 Sunset Blvd, Suite 100, Dallas, TX 75238
11810 Sunset Blvd, Suite 100, Dallas, TX 75238
11810 Sunset Blvd, Suite 100, Dallas, TX 75238
11810 Sunset Blvd, Suite 100, Dallas, TX 75238
11810 Sunset Blvd, Suite 100, Dallas, TX 75238
11810 Sunset Blvd, Suite 100, Dallas, TX 75238
11810 Sunset Blvd, Suite 100, Dallas, TX 75238
11810 Sunset Blvd, Suite 100, Dallas, TX 75238
11810 Sunset Blvd, Suite 100, Dallas, TX 75238
11810 Sunset Blvd, Suite 100, Dallas, TX 75238

FINAL ELECTRICAL CONNECTION BY CUSTOMER





SADDLE CREEK

13-1438 R6

Sheet 5 of 25

SADDLE CREEK - PERMIT

7509 POPLAR AVE.
GERMANTOWN, TN
38138

Asst. Rep. STAN MACRUM

Coordinator JAMIE MACRUM

Designer P. AGUIAR

Date 11/16/13

Client	
Station	
Estimating	
Job	
Landed	
Engineering	

PERMITTING: ILLUSTRATED ALL ELECTRICAL SYMBOLS AND CONNECTIONS TO THE SERVICE PANELS. THE PERMITTING OFFICE SHALL BE RESPONSIBLE FOR THE CORRECTNESS OF THE INFORMATION PROVIDED BY THE CLIENT.

PERMITTING: ILLUSTRATED ALL ELECTRICAL SYMBOLS AND CONNECTIONS TO THE SERVICE PANELS. THE PERMITTING OFFICE SHALL BE RESPONSIBLE FOR THE CORRECTNESS OF THE INFORMATION PROVIDED BY THE CLIENT.

PERMITTING: ILLUSTRATED ALL ELECTRICAL SYMBOLS AND CONNECTIONS TO THE SERVICE PANELS. THE PERMITTING OFFICE SHALL BE RESPONSIBLE FOR THE CORRECTNESS OF THE INFORMATION PROVIDED BY THE CLIENT.

PERMITTING: ILLUSTRATED ALL ELECTRICAL SYMBOLS AND CONNECTIONS TO THE SERVICE PANELS. THE PERMITTING OFFICE SHALL BE RESPONSIBLE FOR THE CORRECTNESS OF THE INFORMATION PROVIDED BY THE CLIENT.

PERMITTING: ILLUSTRATED ALL ELECTRICAL SYMBOLS AND CONNECTIONS TO THE SERVICE PANELS. THE PERMITTING OFFICE SHALL BE RESPONSIBLE FOR THE CORRECTNESS OF THE INFORMATION PROVIDED BY THE CLIENT.

PERMITTING: ILLUSTRATED ALL ELECTRICAL SYMBOLS AND CONNECTIONS TO THE SERVICE PANELS. THE PERMITTING OFFICE SHALL BE RESPONSIBLE FOR THE CORRECTNESS OF THE INFORMATION PROVIDED BY THE CLIENT.

PERMITTING: ILLUSTRATED ALL ELECTRICAL SYMBOLS AND CONNECTIONS TO THE SERVICE PANELS. THE PERMITTING OFFICE SHALL BE RESPONSIBLE FOR THE CORRECTNESS OF THE INFORMATION PROVIDED BY THE CLIENT.

PERMITTING: ILLUSTRATED ALL ELECTRICAL SYMBOLS AND CONNECTIONS TO THE SERVICE PANELS. THE PERMITTING OFFICE SHALL BE RESPONSIBLE FOR THE CORRECTNESS OF THE INFORMATION PROVIDED BY THE CLIENT.

PERMITTING: ILLUSTRATED ALL ELECTRICAL SYMBOLS AND CONNECTIONS TO THE SERVICE PANELS. THE PERMITTING OFFICE SHALL BE RESPONSIBLE FOR THE CORRECTNESS OF THE INFORMATION PROVIDED BY THE CLIENT.

PERMITTING: ILLUSTRATED ALL ELECTRICAL SYMBOLS AND CONNECTIONS TO THE SERVICE PANELS. THE PERMITTING OFFICE SHALL BE RESPONSIBLE FOR THE CORRECTNESS OF THE INFORMATION PROVIDED BY THE CLIENT.

PERMITTING: ILLUSTRATED ALL ELECTRICAL SYMBOLS AND CONNECTIONS TO THE SERVICE PANELS. THE PERMITTING OFFICE SHALL BE RESPONSIBLE FOR THE CORRECTNESS OF THE INFORMATION PROVIDED BY THE CLIENT.

PERMITTING: ILLUSTRATED ALL ELECTRICAL SYMBOLS AND CONNECTIONS TO THE SERVICE PANELS. THE PERMITTING OFFICE SHALL BE RESPONSIBLE FOR THE CORRECTNESS OF THE INFORMATION PROVIDED BY THE CLIENT.

PERMITTING: ILLUSTRATED ALL ELECTRICAL SYMBOLS AND CONNECTIONS TO THE SERVICE PANELS. THE PERMITTING OFFICE SHALL BE RESPONSIBLE FOR THE CORRECTNESS OF THE INFORMATION PROVIDED BY THE CLIENT.

PERMITTING: ILLUSTRATED ALL ELECTRICAL SYMBOLS AND CONNECTIONS TO THE SERVICE PANELS. THE PERMITTING OFFICE SHALL BE RESPONSIBLE FOR THE CORRECTNESS OF THE INFORMATION PROVIDED BY THE CLIENT.

PERMITTING: ILLUSTRATED ALL ELECTRICAL SYMBOLS AND CONNECTIONS TO THE SERVICE PANELS. THE PERMITTING OFFICE SHALL BE RESPONSIBLE FOR THE CORRECTNESS OF THE INFORMATION PROVIDED BY THE CLIENT.

PERMITTING: ILLUSTRATED ALL ELECTRICAL SYMBOLS AND CONNECTIONS TO THE SERVICE PANELS. THE PERMITTING OFFICE SHALL BE RESPONSIBLE FOR THE CORRECTNESS OF THE INFORMATION PROVIDED BY THE CLIENT.

PERMITTING: ILLUSTRATED ALL ELECTRICAL SYMBOLS AND CONNECTIONS TO THE SERVICE PANELS. THE PERMITTING OFFICE SHALL BE RESPONSIBLE FOR THE CORRECTNESS OF THE INFORMATION PROVIDED BY THE CLIENT.

PERMITTING: ILLUSTRATED ALL ELECTRICAL SYMBOLS AND CONNECTIONS TO THE SERVICE PANELS. THE PERMITTING OFFICE SHALL BE RESPONSIBLE FOR THE CORRECTNESS OF THE INFORMATION PROVIDED BY THE CLIENT.

PERMITTING: ILLUSTRATED ALL ELECTRICAL SYMBOLS AND CONNECTIONS TO THE SERVICE PANELS. THE PERMITTING OFFICE SHALL BE RESPONSIBLE FOR THE CORRECTNESS OF THE INFORMATION PROVIDED BY THE CLIENT.

PERMITTING: ILLUSTRATED ALL ELECTRICAL SYMBOLS AND CONNECTIONS TO THE SERVICE PANELS. THE PERMITTING OFFICE SHALL BE RESPONSIBLE FOR THE CORRECTNESS OF THE INFORMATION PROVIDED BY THE CLIENT.

PERMITTING: ILLUSTRATED ALL ELECTRICAL SYMBOLS AND CONNECTIONS TO THE SERVICE PANELS. THE PERMITTING OFFICE SHALL BE RESPONSIBLE FOR THE CORRECTNESS OF THE INFORMATION PROVIDED BY THE CLIENT.

PERMITTING: ILLUSTRATED ALL ELECTRICAL SYMBOLS AND CONNECTIONS TO THE SERVICE PANELS. THE PERMITTING OFFICE SHALL BE RESPONSIBLE FOR THE CORRECTNESS OF THE INFORMATION PROVIDED BY THE CLIENT.

PERMITTING: ILLUSTRATED ALL ELECTRICAL SYMBOLS AND CONNECTIONS TO THE SERVICE PANELS. THE PERMITTING OFFICE SHALL BE RESPONSIBLE FOR THE CORRECTNESS OF THE INFORMATION PROVIDED BY THE CLIENT.

PERMITTING: ILLUSTRATED ALL ELECTRICAL SYMBOLS AND CONNECTIONS TO THE SERVICE PANELS. THE PERMITTING OFFICE SHALL BE RESPONSIBLE FOR THE CORRECTNESS OF THE INFORMATION PROVIDED BY THE CLIENT.

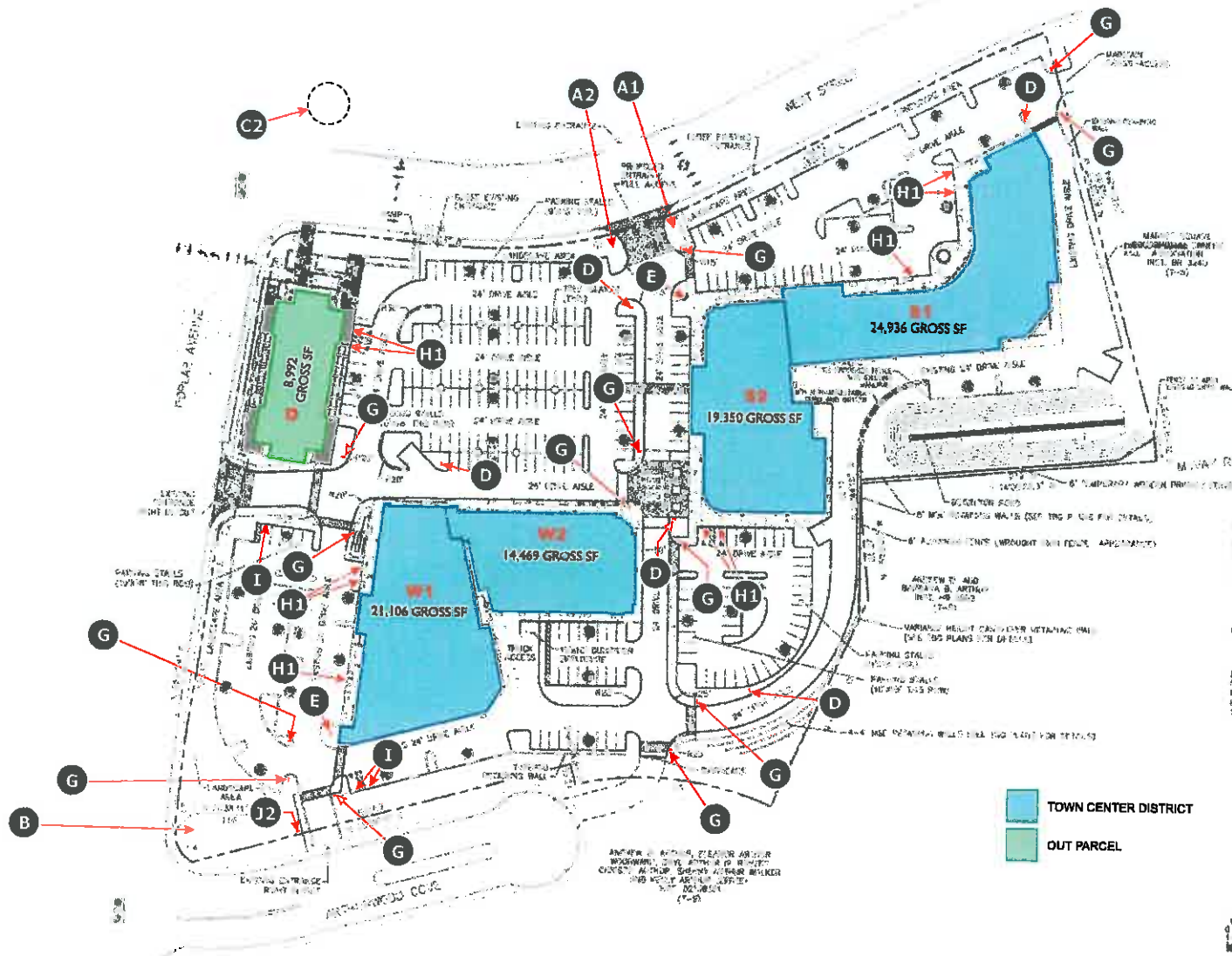
PERMITTING: ILLUSTRATED ALL ELECTRICAL SYMBOLS AND CONNECTIONS TO THE SERVICE PANELS. THE PERMITTING OFFICE SHALL BE RESPONSIBLE FOR THE CORRECTNESS OF THE INFORMATION PROVIDED BY THE CLIENT.

PERMITTING: ILLUSTRATED ALL ELECTRICAL SYMBOLS AND CONNECTIONS TO THE SERVICE PANELS. THE PERMITTING OFFICE SHALL BE RESPONSIBLE FOR THE CORRECTNESS OF THE INFORMATION PROVIDED BY THE CLIENT.

PERMITTING: ILLUSTRATED ALL ELECTRICAL SYMBOLS AND CONNECTIONS TO THE SERVICE PANELS. THE PERMITTING OFFICE SHALL BE RESPONSIBLE FOR THE CORRECTNESS OF THE INFORMATION PROVIDED BY THE CLIENT.

PERMITTING: ILLUSTRATED ALL ELECTRICAL SYMBOLS AND CONNECTIONS TO THE SERVICE PANELS. THE PERMITTING OFFICE SHALL BE RESPONSIBLE FOR THE CORRECTNESS OF THE INFORMATION PROVIDED BY THE CLIENT.

PERMITTING: ILLUSTRATED ALL ELECTRICAL SYMBOLS AND CONNECTIONS TO THE SERVICE PANELS. THE PERMITTING OFFICE SHALL BE RESPONSIBLE FOR THE CORRECTNESS OF THE INFORMATION PROVIDED BY THE CLIENT.



TOWN CENTER DISTRICT

OUT PARCEL



Chandler Signs

2880 Dumas Hwy 281-455-2880	Chattanooga, TN 37423 Fax 281-455-2884
17778 Bus Parks, Ste 101 281-441-5001	Chattanooga, TN 37423 Fax 281-441-5754
1400 Saddle Creek, Ste 200 281-470-5979	Chattanooga, TN 37423 Fax 281-470-5979
2884 East Hill Point Circle 281-455-1107	Chattanooga, TN 37423 Fax 281-455-1110
27 Woodland Park Blvd 888-853-7853	Chattanooga, TN 37423 Fax 888-853-7853
P.O. Box 113 285 Saddle Creek 281-455-9897	Chattanooga, TN 37423 Fax 281-455-9897
1332 East Saddle Creek, Ste 107 C 708-661-8897	Chattanooga, TN 37423 Fax 708-661-8897

FINAL ELECTRICAL CONNECTION BY CUSTOMER





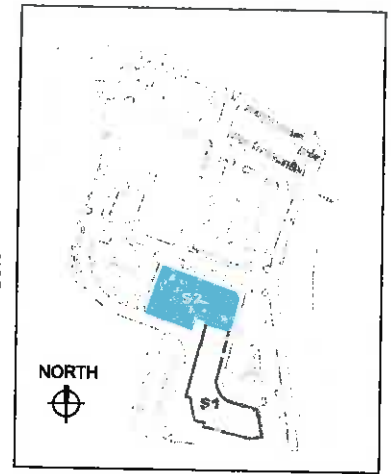
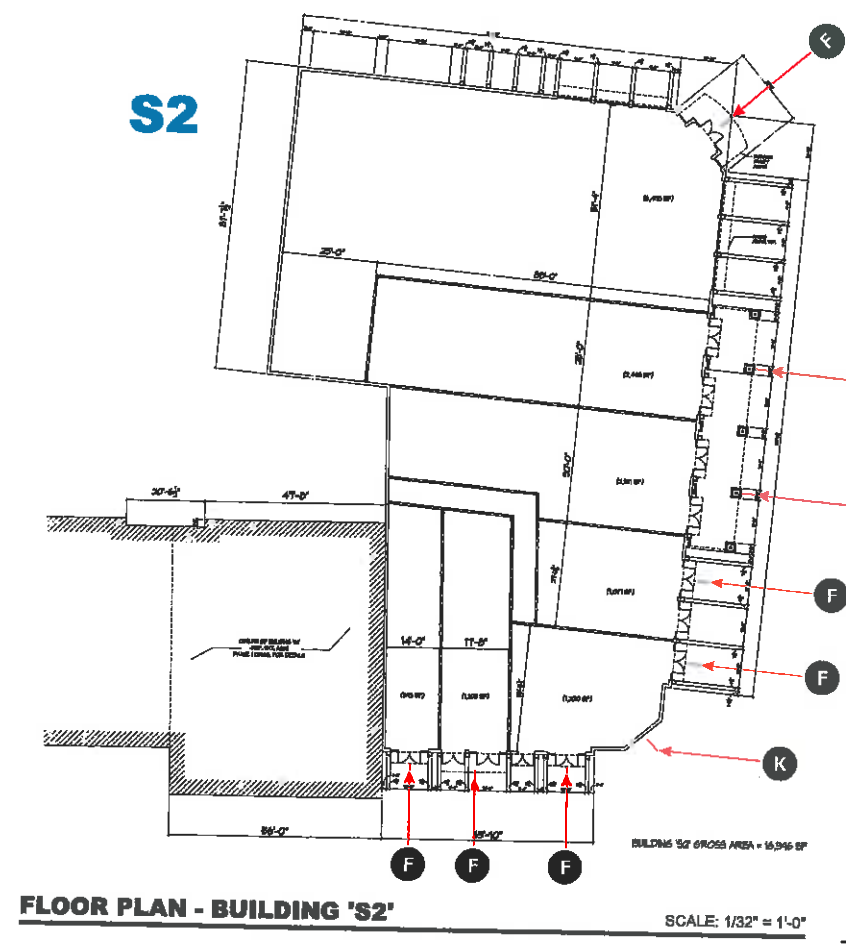
SADDLE CREEK

13-1438 R6	
Sheet 7 of 25	
SADDLE CREEK - PERMIT	
7508 POPLAR AVE, GERMANTOWN, TN 38138	
Arch. Rep.	STAN MACRUM
Designer	JAMIE MACRUM
Designer	P. AGUIAR
Date	11/16/13
Client	
State	
Engineering	
Arch.	
Electrical	
MEP	
Landmark	
Engineering	

PERMITTEE WARRANTS ALL INFORMATION PROVIDED TO BE TRUE AND CORRECT. PERMITTEE'S LIABILITY IS LIMITED TO THE DESIGN AND CONSTRUCTION OF THE PROJECT AS SHOWN ON THESE PLANS. THE PERMITTEE SHALL BE RESPONSIBLE FOR OBTAINING ALL NECESSARY PERMITS AND APPROVALS FROM THE LOCAL GOVERNMENT. THE PERMITTEE SHALL BE RESPONSIBLE FOR OBTAINING ALL NECESSARY PERMITS AND APPROVALS FROM THE LOCAL GOVERNMENT. THE PERMITTEE SHALL BE RESPONSIBLE FOR OBTAINING ALL NECESSARY PERMITS AND APPROVALS FROM THE LOCAL GOVERNMENT.

DESIGN WORK PROVIDED FOR CUSTOMER PROVIDED FOR INFORMATION ONLY. THE PERMITTEE SHALL BE RESPONSIBLE FOR OBTAINING ALL NECESSARY PERMITS AND APPROVALS FROM THE LOCAL GOVERNMENT. THE PERMITTEE SHALL BE RESPONSIBLE FOR OBTAINING ALL NECESSARY PERMITS AND APPROVALS FROM THE LOCAL GOVERNMENT.

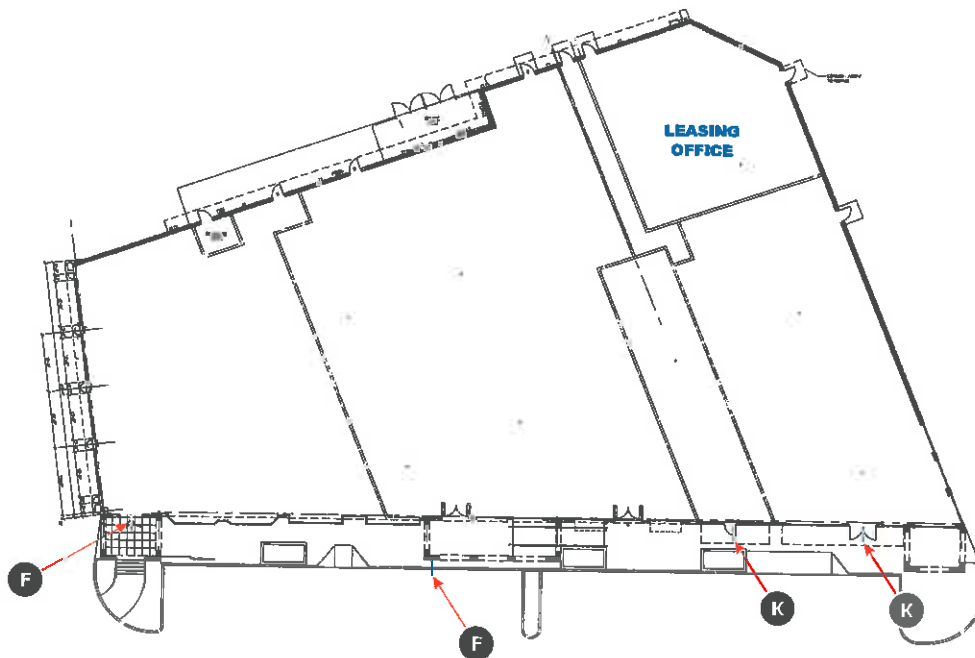
DESIGN WORK PROVIDED FOR CUSTOMER PROVIDED FOR INFORMATION ONLY. THE PERMITTEE SHALL BE RESPONSIBLE FOR OBTAINING ALL NECESSARY PERMITS AND APPROVALS FROM THE LOCAL GOVERNMENT. THE PERMITTEE SHALL BE RESPONSIBLE FOR OBTAINING ALL NECESSARY PERMITS AND APPROVALS FROM THE LOCAL GOVERNMENT.



Chandler Signs	
2100 Houser Way 334-960-0900	Bella, TX 75209 Tel 214-960-0900
12200 MacArthur, Pk 300 334-960-0900	The Woodlands, TX 77381 Tel 334-960-0900
5400 Harbor Freeway, Box 2800 334-960-0900	Lubbock, TX 79424 Tel 334-960-0900
2000 Road 200, Dallas Circle 334-960-0900	Rockwall, TX 75087 Tel 334-960-0900
22 Huddlestone Park Circle 334-960-0900	Rockwall, TX 75087 Tel 334-960-0900
1401 Bay 155, 2nd Street, 1st Floor 334-960-0900	Portland, TX 78064 Tel 334-960-0900
1300 Park Center Drive, UNIT C 334-960-0900	Waco, TX 76798 Tel 334-960-0900

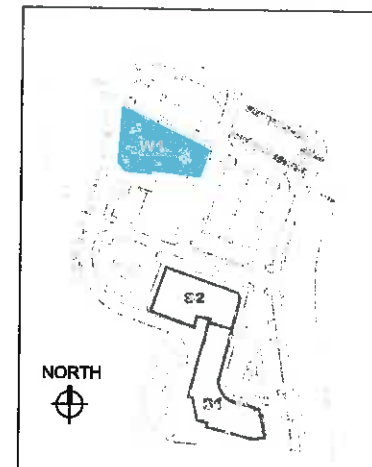
FINAL ELECTRICAL CONNECTION BY CUSTOMER

W1



FLOOR PLAN - BUILDING 'W1'

SCALE: 1/32" = 1'-0"



KEY MAP

13-1438 RB	
Sheet	8 of 25
SADDLE CREEK - PERMIT	
7608 POPLAR AVE. GERMANTOWN, TN 38138	
Arch. Rep.	STAN MACRUM
Coordinator	JAMIE MACRUM
Designer	P. AGUIAR
Date	11/18/13

Client	
Sales	
Electrical	
Plum	
Landscap	
Engineering	

REVISIONS: UPDATED ALL BUILDING DIMENSIONS; HIGH VOLTAGE TRANSFORMER AREA; DEPT OFFICE & SERVICE VEHICLE SERVICE OPTION BLIND ON COUNTERS IN SECTION 0510.

REVISIONS: REVISED PER CONTRACTOR PROVIDED REQUIREMENTS WITH CONFORMANCE OF CALCULATED BOMBAGE ALLOWED.

REVISIONS: DELETED ALL HATCHING AND DRAWING CHANGE LIST WITH CONFORMANCE OF CALCULATED BOMBAGE ALLOWED.

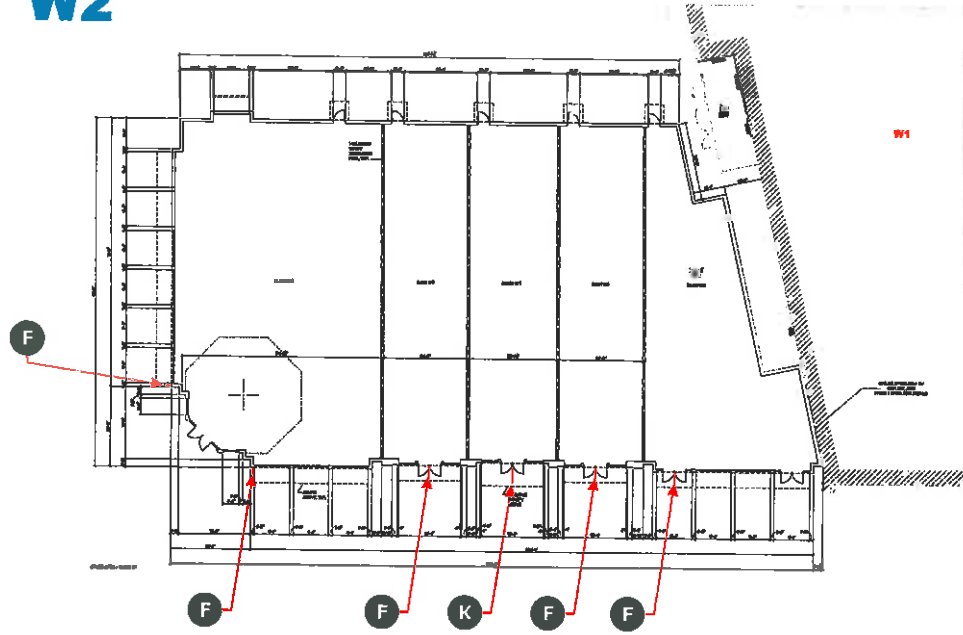
REVISIONS: DELETED OPTION B OF SIGN 'A' AND 'B' OF SIGN 'C' TO A CHANGED SIGN TYPE TO SIGN 'A', COPY TO SIGN 'B', WHITE SIGN COPY TO SIGN 'C' TO SIGN 'D' TO SIGN 'E' TO SIGN 'F' TO SIGN 'G' TO SIGN 'H' TO SIGN 'I' TO SIGN 'J' TO SIGN 'K' TO SIGN 'L' TO SIGN 'M' TO SIGN 'N' TO SIGN 'O' TO SIGN 'P' TO SIGN 'Q' TO SIGN 'R' TO SIGN 'S' TO SIGN 'T' TO SIGN 'U' TO SIGN 'V' TO SIGN 'W' TO SIGN 'X' TO SIGN 'Y' TO SIGN 'Z' TO SIGN 'AA' TO SIGN 'AB' TO SIGN 'AC' TO SIGN 'AD' TO SIGN 'AE' TO SIGN 'AF' TO SIGN 'AG' TO SIGN 'AH' TO SIGN 'AI' TO SIGN 'AJ' TO SIGN 'AK' TO SIGN 'AL' TO SIGN 'AM' TO SIGN 'AN' TO SIGN 'AO' TO SIGN 'AP' TO SIGN 'AQ' TO SIGN 'AR' TO SIGN 'AS' TO SIGN 'AT' TO SIGN 'AU' TO SIGN 'AV' TO SIGN 'AW' TO SIGN 'AX' TO SIGN 'AY' TO SIGN 'AZ' TO SIGN 'BA' TO SIGN 'BB' TO SIGN 'BC' TO SIGN 'BD' TO SIGN 'BE' TO SIGN 'BF' TO SIGN 'BG' TO SIGN 'BH' TO SIGN 'BI' TO SIGN 'BJ' TO SIGN 'BK' TO SIGN 'BL' TO SIGN 'BM' TO SIGN 'BN' TO SIGN 'BO' TO SIGN 'BP' TO SIGN 'BQ' TO SIGN 'BR' TO SIGN 'BS' TO SIGN 'BT' TO SIGN 'BU' TO SIGN 'BV' TO SIGN 'BW' TO SIGN 'BX' TO SIGN 'BY' TO SIGN 'BZ' TO SIGN 'CA' TO SIGN 'CB' TO SIGN 'CC' TO SIGN 'CD' TO SIGN 'CE' TO SIGN 'CF' TO SIGN 'CG' TO SIGN 'CH' TO SIGN 'CI' TO SIGN 'CJ' TO SIGN 'CK' TO SIGN 'CL' TO SIGN 'CM' TO SIGN 'CN' TO SIGN 'CO' TO SIGN 'CP' TO SIGN 'CQ' TO SIGN 'CR' TO SIGN 'CS' TO SIGN 'CT' TO SIGN 'CU' TO SIGN 'CV' TO SIGN 'CW' TO SIGN 'CX' TO SIGN 'CY' TO SIGN 'CZ' TO SIGN 'DA' TO SIGN 'DB' TO SIGN 'DC' TO SIGN 'DD' TO SIGN 'DE' TO SIGN 'DF' TO SIGN 'DG' TO SIGN 'DH' TO SIGN 'DI' TO SIGN 'DJ' TO SIGN 'DK' TO SIGN 'DL' TO SIGN 'DM' TO SIGN 'DN' TO SIGN 'DO' TO SIGN 'DP' TO SIGN 'DQ' TO SIGN 'DR' TO SIGN 'DS' TO SIGN 'DT' TO SIGN 'DU' TO SIGN 'DV' TO SIGN 'DW' TO SIGN 'DX' TO SIGN 'DY' TO SIGN 'DZ' TO SIGN 'EA' TO SIGN 'EB' TO SIGN 'EC' TO SIGN 'ED' TO SIGN 'EE' TO SIGN 'EF' TO SIGN 'EG' TO SIGN 'EH' TO SIGN 'EI' TO SIGN 'EJ' TO SIGN 'EK' TO SIGN 'EL' TO SIGN 'EM' TO SIGN 'EN' TO SIGN 'EO' TO SIGN 'EP' TO SIGN 'EQ' TO SIGN 'ER' TO SIGN 'ES' TO SIGN 'ET' TO SIGN 'EU' TO SIGN 'EV' TO SIGN 'EW' TO SIGN 'EX' TO SIGN 'EY' TO SIGN 'EZ' TO SIGN 'FA' TO SIGN 'FB' TO SIGN 'FC' TO SIGN 'FD' TO SIGN 'FE' TO SIGN 'FF' TO SIGN 'FG' TO SIGN 'FH' TO SIGN 'FI' TO SIGN 'FJ' TO SIGN 'FK' TO SIGN 'FL' TO SIGN 'FM' TO SIGN 'FN' TO SIGN 'FO' TO SIGN 'FP' TO SIGN 'FQ' TO SIGN 'FR' TO SIGN 'FS' TO SIGN 'FT' TO SIGN 'FU' TO SIGN 'FV' TO SIGN 'FW' TO SIGN 'FX' TO SIGN 'FY' TO SIGN 'FZ' TO SIGN 'GA' TO SIGN 'GB' TO SIGN 'GC' TO SIGN 'GD' TO SIGN 'GE' TO SIGN 'GF' TO SIGN 'GG' TO SIGN 'GH' TO SIGN 'GI' TO SIGN 'GJ' TO SIGN 'GK' TO SIGN 'GL' TO SIGN 'GM' TO SIGN 'GN' TO SIGN 'GO' TO SIGN 'GP' TO SIGN 'GQ' TO SIGN 'GR' TO SIGN 'GS' TO SIGN 'GT' TO SIGN 'GU' TO SIGN 'GV' TO SIGN 'GW' TO SIGN 'GX' TO SIGN 'GY' TO SIGN 'GZ' TO SIGN 'HA' TO SIGN 'HB' TO SIGN 'HC' TO SIGN 'HD' TO SIGN 'HE' TO SIGN 'HF' TO SIGN 'HG' TO SIGN 'HH' TO SIGN 'HI' TO SIGN 'HJ' TO SIGN 'HK' TO SIGN 'HL' TO SIGN 'HM' TO SIGN 'HN' TO SIGN 'HO' TO SIGN 'HP' TO SIGN 'HQ' TO SIGN 'HR' TO SIGN 'HS' TO SIGN 'HT' TO SIGN 'HU' TO SIGN 'HV' TO SIGN 'HW' TO SIGN 'HX' TO SIGN 'HY' TO SIGN 'HZ' TO SIGN 'IA' TO SIGN 'IB' TO SIGN 'IC' TO SIGN 'ID' TO SIGN 'IE' TO SIGN 'IF' TO SIGN 'IG' TO SIGN 'IH' TO SIGN 'II' TO SIGN 'IJ' TO SIGN 'IK' TO SIGN 'IL' TO SIGN 'IM' TO SIGN 'IN' TO SIGN 'IO' TO SIGN 'IP' TO SIGN 'IQ' TO SIGN 'IR' TO SIGN 'IS' TO SIGN 'IT' TO SIGN 'IU' TO SIGN 'IV' TO SIGN 'IW' TO SIGN 'IX' TO SIGN 'IY' TO SIGN 'IZ' TO SIGN 'JA' TO SIGN 'JB' TO SIGN 'JC' TO SIGN 'JD' TO SIGN 'JE' TO SIGN 'JF' TO SIGN 'JG' TO SIGN 'JH' TO SIGN 'JI' TO SIGN 'JJ' TO SIGN 'JK' TO SIGN 'JL' TO SIGN 'JM' TO SIGN 'JN' TO SIGN 'JO' TO SIGN 'JP' TO SIGN 'JQ' TO SIGN 'JR' TO SIGN 'JS' TO SIGN 'JT' TO SIGN 'JU' TO SIGN 'JV' TO SIGN 'JW' TO SIGN 'JX' TO SIGN 'JY' TO SIGN 'JZ' TO SIGN 'KA' TO SIGN 'KB' TO SIGN 'KC' TO SIGN 'KD' TO SIGN 'KE' TO SIGN 'KF' TO SIGN 'KG' TO SIGN 'KH' TO SIGN 'KI' TO SIGN 'KJ' TO SIGN 'KK' TO SIGN 'KL' TO SIGN 'KM' TO SIGN 'KN' TO SIGN 'KO' TO SIGN 'KP' TO SIGN 'KQ' TO SIGN 'KR' TO SIGN 'KS' TO SIGN 'KT' TO SIGN 'KU' TO SIGN 'KV' TO SIGN 'KW' TO SIGN 'KX' TO SIGN 'KY' TO SIGN 'KZ' TO SIGN 'LA' TO SIGN 'LB' TO SIGN 'LC' TO SIGN 'LD' TO SIGN 'LE' TO SIGN 'LF' TO SIGN 'LG' TO SIGN 'LH' TO SIGN 'LI' TO SIGN 'LJ' TO SIGN 'LK' TO SIGN 'LL' TO SIGN 'LM' TO SIGN 'LN' TO SIGN 'LO' TO SIGN 'LP' TO SIGN 'LQ' TO SIGN 'LR' TO SIGN 'LS' TO SIGN 'LT' TO SIGN 'LU' TO SIGN 'LV' TO SIGN 'LW' TO SIGN 'LX' TO SIGN 'LY' TO SIGN 'LZ' TO SIGN 'MA' TO SIGN 'MB' TO SIGN 'MC' TO SIGN 'MD' TO SIGN 'ME' TO SIGN 'MF' TO SIGN 'MG' TO SIGN 'MH' TO SIGN 'MI' TO SIGN 'MJ' TO SIGN 'MK' TO SIGN 'ML' TO SIGN 'MM' TO SIGN 'MN' TO SIGN 'MO' TO SIGN 'MP' TO SIGN 'MQ' TO SIGN 'MR' TO SIGN 'MS' TO SIGN 'MT' TO SIGN 'MU' TO SIGN 'MV' TO SIGN 'MW' TO SIGN 'MX' TO SIGN 'MY' TO SIGN 'MZ' TO SIGN 'NA' TO SIGN 'NB' TO SIGN 'NC' TO SIGN 'ND' TO SIGN 'NE' TO SIGN 'NF' TO SIGN 'NG' TO SIGN 'NH' TO SIGN 'NI' TO SIGN 'NJ' TO SIGN 'NK' TO SIGN 'NL' TO SIGN 'NM' TO SIGN 'NN' TO SIGN 'NO' TO SIGN 'NP' TO SIGN 'NQ' TO SIGN 'NR' TO SIGN 'NS' TO SIGN 'NT' TO SIGN 'NU' TO SIGN 'NV' TO SIGN 'NW' TO SIGN 'NX' TO SIGN 'NY' TO SIGN 'NZ' TO SIGN 'OA' TO SIGN 'OB' TO SIGN 'OC' TO SIGN 'OD' TO SIGN 'OE' TO SIGN 'OF' TO SIGN 'OG' TO SIGN 'OH' TO SIGN 'OI' TO SIGN 'OJ' TO SIGN 'OK' TO SIGN 'OL' TO SIGN 'OM' TO SIGN 'ON' TO SIGN 'OO' TO SIGN 'OP' TO SIGN 'OQ' TO SIGN 'OR' TO SIGN 'OS' TO SIGN 'OT' TO SIGN 'OU' TO SIGN 'OV' TO SIGN 'OW' TO SIGN 'OX' TO SIGN 'OY' TO SIGN 'OZ' TO SIGN 'PA' TO SIGN 'PB' TO SIGN 'PC' TO SIGN 'PD' TO SIGN 'PE' TO SIGN 'PF' TO SIGN 'PG' TO SIGN 'PH' TO SIGN 'PI' TO SIGN 'PJ' TO SIGN 'PK' TO SIGN 'PL' TO SIGN 'PM' TO SIGN 'PN' TO SIGN 'PO' TO SIGN 'PP' TO SIGN 'PQ' TO SIGN 'PR' TO SIGN 'PS' TO SIGN 'PT' TO SIGN 'PU' TO SIGN 'PV' TO SIGN 'PW' TO SIGN 'PX' TO SIGN 'PY' TO SIGN 'PZ' TO SIGN 'QA' TO SIGN 'QB' TO SIGN 'QC' TO SIGN 'QD' TO SIGN 'QE' TO SIGN 'QF' TO SIGN 'QG' TO SIGN 'QH' TO SIGN 'QI' TO SIGN 'QJ' TO SIGN 'QK' TO SIGN 'QL' TO SIGN 'QM' TO SIGN 'QN' TO SIGN 'QO' TO SIGN 'QP' TO SIGN 'QQ' TO SIGN 'QR' TO SIGN 'QS' TO SIGN 'QT' TO SIGN 'QU' TO SIGN 'QV' TO SIGN 'QW' TO SIGN 'QX' TO SIGN 'QY' TO SIGN 'QZ' TO SIGN 'RA' TO SIGN 'RB' TO SIGN 'RC' TO SIGN 'RD' TO SIGN 'RE' TO SIGN 'RF' TO SIGN 'RG' TO SIGN 'RH' TO SIGN 'RI' TO SIGN 'RJ' TO SIGN 'RK' TO SIGN 'RL' TO SIGN 'RM' TO SIGN 'RN' TO SIGN 'RO' TO SIGN 'RP' TO SIGN 'RQ' TO SIGN 'RR' TO SIGN 'RS' TO SIGN 'RT' TO SIGN 'RU' TO SIGN 'RV' TO SIGN 'RW' TO SIGN 'RX' TO SIGN 'RY' TO SIGN 'RZ' TO SIGN 'SA' TO SIGN 'SB' TO SIGN 'SC' TO SIGN 'SD' TO SIGN 'SE' TO SIGN 'SF' TO SIGN 'SG' TO SIGN 'SH' TO SIGN 'SI' TO SIGN 'SJ' TO SIGN 'SK' TO SIGN 'SL' TO SIGN 'SM' TO SIGN 'SN' TO SIGN 'SO' TO SIGN 'SP' TO SIGN 'SQ' TO SIGN 'SR' TO SIGN 'SS' TO SIGN 'ST' TO SIGN 'SU' TO SIGN 'SV' TO SIGN 'SW' TO SIGN 'SX' TO SIGN 'SY' TO SIGN 'SZ' TO SIGN 'TA' TO SIGN 'TB' TO SIGN 'TC' TO SIGN 'TD' TO SIGN 'TE' TO SIGN 'TF' TO SIGN 'TG' TO SIGN 'TH' TO SIGN 'TI' TO SIGN 'TJ' TO SIGN 'TK' TO SIGN 'TL' TO SIGN 'TM' TO SIGN 'TN' TO SIGN 'TO' TO SIGN 'TP' TO SIGN 'TQ' TO SIGN 'TR' TO SIGN 'TS' TO SIGN 'TT' TO SIGN 'TU' TO SIGN 'TV' TO SIGN 'TW' TO SIGN 'TX' TO SIGN 'TY' TO SIGN 'TZ' TO SIGN 'UA' TO SIGN 'UB' TO SIGN 'UC' TO SIGN 'UD' TO SIGN 'UE' TO SIGN 'UF' TO SIGN 'UG' TO SIGN 'UH' TO SIGN 'UI' TO SIGN 'UJ' TO SIGN 'UK' TO SIGN 'UL' TO SIGN 'UM' TO SIGN 'UN' TO SIGN 'UO' TO SIGN 'UP' TO SIGN 'UQ' TO SIGN 'UR' TO SIGN 'US' TO SIGN 'UT' TO SIGN 'UU' TO SIGN 'UV' TO SIGN 'UW' TO SIGN 'UX' TO SIGN 'UY' TO SIGN 'UZ' TO SIGN 'VA' TO SIGN 'VB' TO SIGN 'VC' TO SIGN 'VD' TO SIGN 'VE' TO SIGN 'VF' TO SIGN 'VG' TO SIGN 'VH' TO SIGN 'VI' TO SIGN 'VJ' TO SIGN 'VK' TO SIGN 'VL' TO SIGN 'VM' TO SIGN 'VN' TO SIGN 'VO' TO SIGN 'VP' TO SIGN 'VQ' TO SIGN 'VR' TO SIGN 'VS' TO SIGN 'VT' TO SIGN 'VU' TO SIGN 'VV' TO SIGN 'VW' TO SIGN 'VX' TO SIGN 'VY' TO SIGN 'VZ' TO SIGN 'WA' TO SIGN 'WB' TO SIGN 'WC' TO SIGN 'WD' TO SIGN 'WE' TO SIGN 'WF' TO SIGN 'WG' TO SIGN 'WH' TO SIGN 'WI' TO SIGN 'WJ' TO SIGN 'WK' TO SIGN 'WL' TO SIGN 'WM' TO SIGN 'WN' TO SIGN 'WO' TO SIGN 'WP' TO SIGN 'WQ' TO SIGN 'WR' TO SIGN 'WS' TO SIGN 'WT' TO SIGN 'WU' TO SIGN 'WV' TO SIGN 'WW' TO SIGN 'WX' TO SIGN 'WY' TO SIGN 'WZ' TO SIGN 'XA' TO SIGN 'XB' TO SIGN 'XC' TO SIGN 'XD' TO SIGN 'XE' TO SIGN 'XF' TO SIGN 'XG' TO SIGN 'XH' TO SIGN 'XI' TO SIGN 'XJ' TO SIGN 'XK' TO SIGN 'XL' TO SIGN 'XM' TO SIGN 'XN' TO SIGN 'XO' TO SIGN 'XP' TO SIGN 'XQ' TO SIGN 'XR' TO SIGN 'XS' TO SIGN 'XT' TO SIGN 'XU' TO SIGN 'XV' TO SIGN 'XW' TO SIGN 'XX' TO SIGN 'XY' TO SIGN 'XZ' TO SIGN 'YA' TO SIGN 'YB' TO SIGN 'YC' TO SIGN 'YD' TO SIGN 'YE' TO SIGN 'YF' TO SIGN 'YG' TO SIGN 'YH' TO SIGN 'YI' TO SIGN 'YJ' TO SIGN 'YK' TO SIGN 'YL' TO SIGN 'YM' TO SIGN 'YN' TO SIGN 'YO' TO SIGN 'YP' TO SIGN 'YQ' TO SIGN 'YR' TO SIGN 'YS' TO SIGN 'YT' TO SIGN 'YU' TO SIGN 'YV' TO SIGN 'YW' TO SIGN 'YX' TO SIGN 'YY' TO SIGN 'YZ' TO SIGN 'ZA' TO SIGN 'ZB' TO SIGN 'ZC' TO SIGN 'ZD' TO SIGN 'ZE' TO SIGN 'ZF' TO SIGN 'ZG' TO SIGN 'ZH' TO SIGN 'ZI' TO SIGN 'ZJ' TO SIGN 'ZK' TO SIGN 'ZL' TO SIGN 'ZM' TO SIGN 'ZN' TO SIGN 'ZO' TO SIGN 'ZP' TO SIGN 'ZQ' TO SIGN 'ZR' TO SIGN 'ZS' TO SIGN 'ZT' TO SIGN 'ZU' TO SIGN 'ZV' TO SIGN 'ZW' TO SIGN 'ZX' TO SIGN 'ZY' TO SIGN 'ZZ'

Chandler Signs

2284 River Side 228-482-2828	Madison, TN 37123 Fax 228-482-2828
57218 Sun Ridge, Box 360 228-478-2828	Fort Ashby, VA 22733 Fax 228-482-2828
400 Southside, Box 150 803-478-2828	Lynchburg, VA 24502 Fax 803-478-2828
8264 Royal Hill Park Circle 803-478-2828	Hampton, VA 23617 Fax 803-478-2828
27 Industrial Park Circle 803-478-2828	Hammond, LA 70424 Fax 803-478-2828
3700 Hwy 138 2nd Street 228-478-2828	Jackson, TN 37674 Fax 228-482-2828
1337 East Chandler Way, VARY C 228-478-2828	Waco, TX 76798 Fax 228-478-2828

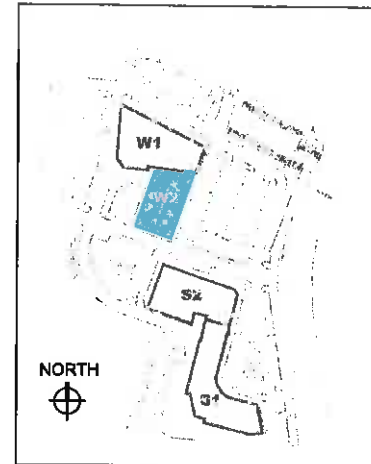
FINAL ELECTRICAL CONNECTION BY CUSTOMER

W2



FLOOR PLAN - BUILDING 'W2'

SCALE: 1/32" = 1'-0"



KEY MAP

SADDLE CREEK

13-1438 R8	
Sheet	9 of 25
SADDLE CREEK - PERMIT	
7509 POPLAR AVE. GERMANTOWN, TN 38138	
Arch. Rep.	STAN MACRUM
Coordinator	JAMIE MACRUM
Designer	P. AGUIAR
Date	11/16/13
Client	
Owner	
Electrical	
Arch.	
Landlord	
Engineering	
<p>PERMITTER: APPROVES ALL BUILDING SUBMITTALS; INDICATES TO WHAT BEARING BEARING; COPY OF THIS SUBMITTAL SHALL BE FILED WITH THE PERMITTING OFFICE. IF ANY CHANGES ARE MADE TO THE SUBMITTAL, THE PERMITTER SHALL BE NOTIFIED AND APPROVAL OBTAINED BEFORE PROCEEDING WITH THE PROJECT.</p> <p>PERMITTER: APPROVES ALL BUILDING SUBMITTALS; INDICATES TO WHAT BEARING BEARING; COPY OF THIS SUBMITTAL SHALL BE FILED WITH THE PERMITTING OFFICE. IF ANY CHANGES ARE MADE TO THE SUBMITTAL, THE PERMITTER SHALL BE NOTIFIED AND APPROVAL OBTAINED BEFORE PROCEEDING WITH THE PROJECT.</p> <p>PERMITTER: APPROVES ALL BUILDING SUBMITTALS; INDICATES TO WHAT BEARING BEARING; COPY OF THIS SUBMITTAL SHALL BE FILED WITH THE PERMITTING OFFICE. IF ANY CHANGES ARE MADE TO THE SUBMITTAL, THE PERMITTER SHALL BE NOTIFIED AND APPROVAL OBTAINED BEFORE PROCEEDING WITH THE PROJECT.</p>	
<p>Chandler Signs</p> <p>2381 Maple Hwy Paducah, KY 40301 724-922-2888 Fax 724-922-2884</p> <p>2710 Blue Hills, Box 140 One America, KY 79121 724-922-2884 Fax 724-922-2884</p> <p>803 Justice Avenue, Box 203 Louisville, KY 40201 502-479-2879 Fax 502-479-2879</p> <p>2240 East Hill Plaza Circle Henderson, KY 40130 502-424-1120 Fax 502-424-1120</p> <p>35 Waterford Park Court Danmoreville, KY 40304 502-424-7925 Fax 502-424-7925</p> <p>140 East 15th Street, Box 110 Portland, ME 04106 207-852-5100 Fax 207-852-5100</p> <p>1320 Park Center Drive, Suite C White, CA 92081 760-497-7923 Fax 760-497-7923</p>	
<p>FINAL ELECTRICAL CONNECTION BY CUSTOMER</p>	

Client	
Sales	
Estimating	
Est.	
Landscape	
Engineering	

REVISIONS: UPDATE ALL BUILDING PERMITS & REVISIONS TO MATCH CHANGE ORDER #01 OPTION 1, AND 2. ADD ANOTHER OPTION UNDER THE CUSTOMER'S OPTION ONE.

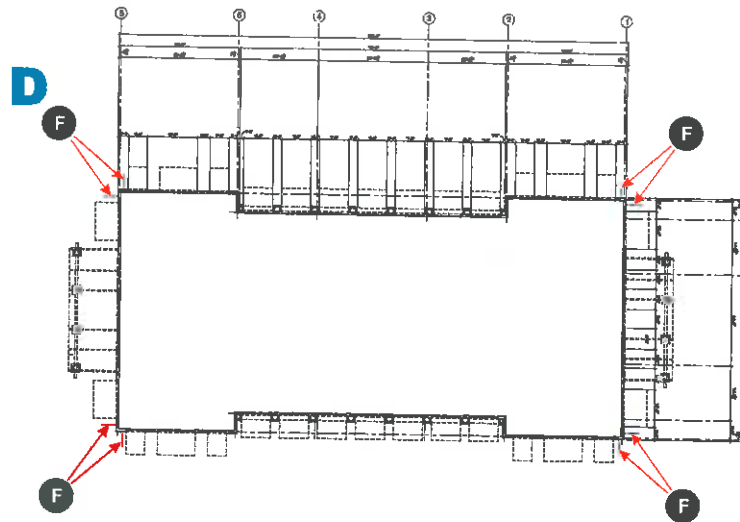
REVISIONS: REVISE PER CUSTOMER PROVIDED REQUIREMENTS. INCLUDE CHANGES TO THE SERVICE AREA.

REVISIONS: REVERT ALL BUILDING AND ELECTRICAL PERMITS WITH CORRECTIONS OF CALCULATED BONDAGE ALLOWED.

REVISIONS: REVISE PER OPTION 1 OR OPTION 2. AS APPLICABLE TO THE CHANGES. REVISIONS TO BE MADE TO ALL PERMITS AND SERVICE AREA TO MATCH THE CHANGES TO THE SERVICE AREA. REVISIONS TO BE MADE TO ALL PERMITS AND SERVICE AREA TO MATCH THE CHANGES TO THE SERVICE AREA.

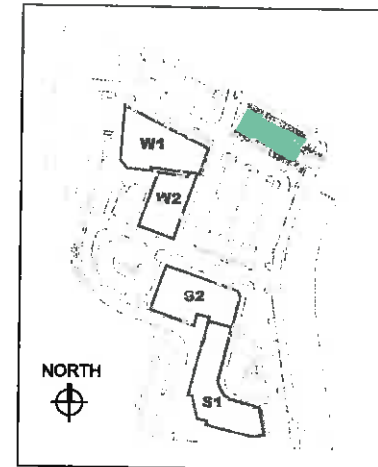
REVISIONS: REVISE PER OPTION 1 OR OPTION 2. AS APPLICABLE TO THE CHANGES. REVISIONS TO BE MADE TO ALL PERMITS AND SERVICE AREA TO MATCH THE CHANGES TO THE SERVICE AREA.

REVISIONS: REVISE PER OPTION 1 OR OPTION 2. AS APPLICABLE TO THE CHANGES. REVISIONS TO BE MADE TO ALL PERMITS AND SERVICE AREA TO MATCH THE CHANGES TO THE SERVICE AREA.



FLOOR PLAN - BUILDING 'D'

SCALE: 1/32" = 1'-0"



KEY MAP

Chandler Signs

- 2004 Shreve Blvd Dallas, TX 75211 Tel: 214-349-2000 Fax: 214-349-2000
- 11180 Oak Ridge, Ste 200 Fort Worth, TX 76116 Tel: 817-499-2000 Fax: 817-499-2000
- 11110 Redwood, Ste 200 Lubbock, TX 79401 Tel: 806-791-2000 Fax: 806-791-2000
- 2024 Broadfield Point Circle Broward, FL 33017 Tel: 954-420-1111 Fax: 954-420-1111
- 37 Middlefield Road, Ste 2000 Berkeley, CA 94702 Tel: 415-844-4700 Fax: 415-844-4700
- 2100 West 125th Street, Ste 2000 Overland Park, KS 66204 Tel: 913-643-6111 Fax: 913-643-6111
- 11111 West 125th Street, Ste 2000 Overland Park, KS 66204 Tel: 913-643-6111 Fax: 913-643-6111

FINAL ELECTRICAL CONNECTION BY CUSTOMER





EXISTING CODE

Signage Calculation:
 Storefront L.F. x 0.5 = Allowed Signage S.F.

PROPOSED

Signage Calculation:
 Storefront L.F. x 1.5 = Allowed Signage S.F.



SADDLE CREEK

13-1438 RB	
Sheet	12 of 25
SADDLE CREEK - PERMIT	
7509 POPLAR AVE. GERMANTOWN, TN 38138	
Act. Rep.	STAN MACRUM
Contractor	JAMIE MACRUM
Designer	P. AGUIAR
Date	11/16/13
Client	
State	
Estimating	
Job	
Landlord	
Engineering	

ALL WORK SHALL BE DONE IN ACCORDANCE WITH THE SADDLE CREEK PERMITTING DEPARTMENT'S SIGNAGE ORDINANCE. THE PERMITTEE SHALL BE RESPONSIBLE FOR OBTAINING ALL NECESSARY APPROVALS FROM THE SADDLE CREEK PERMITTING DEPARTMENT. THE PERMITTEE SHALL BE RESPONSIBLE FOR OBTAINING ALL NECESSARY APPROVALS FROM THE SADDLE CREEK PERMITTING DEPARTMENT. THE PERMITTEE SHALL BE RESPONSIBLE FOR OBTAINING ALL NECESSARY APPROVALS FROM THE SADDLE CREEK PERMITTING DEPARTMENT.

FINAL ELECTRICAL CONNECTION BY CUSTOMER



- 2888 Market Blvd, Dallas, TX 75235
214-962-2000 Fax 214-962-2004
- 5718 Dan Patch, Ste 200, The Woodlands, TX 77380
281-360-2000 Fax 281-360-6774
- 1311 Bayshore, Ste 200, Lakeville, VT 05455
802-479-8010 Fax 802-479-8010
- 2004 Broad St, Palm Circle, Sarasota, FL 34237
813-432-1100 Fax 813-432-1100
- 27 Woodland Park Blvd, Birmingham, AL 35214
800-891-0903 Fax 205-340-8724
- 524, West 15th, 3rd Street, Dallas, TX 75220
214-962-2000 Fax 214-962-2004
- 1230 West Center Street, UNIT C, Dallas, TX 75220
214-962-2000 Fax 214-962-2004



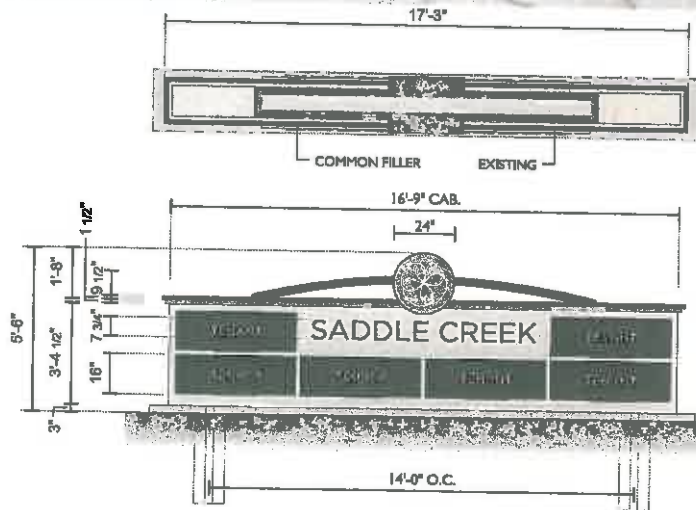
AFTER



BEFORE

REMOVE & DISCARD EXISTING BRICK MONUMENT.

KEEP EXISTING PRIMARY ELEC. SERVICE



1 1/2" ALUM. SQ. TUBE DECOR ARCHES AT TOP PTD. MATTHEWS DK. BRONZE.

ALUM. FABRICATED CABINET - PTD. OFF WHITE.(VERIFY COLOR)

"SADDLE CREEK"

ROUT-OUT, PUSH-THRU 3/4" THK. CLEAR ACRYLIC COPY.
1ST. SURFACE 3M #3630-22 BLACK & 2ND. SURFACE WHITE DIFFUSER.
INTERNALLY ILLUMINATED WITH 7100K WHITE LED'S.

TENANT PANELS:

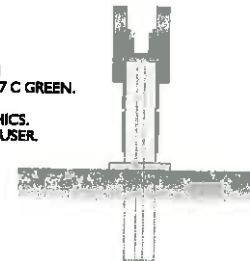
1" DEEP ALUM. FABRICATED TENANT PAN-PANELS PTD. MATTHEWS DK. BRONZE
FUTURE TENANT NAMES ARE TO BE ROUT-OUT SHO-THRU WHITE ACRYLIC.
(FUTURE W.O.)
INTERNALLY ILLUMINATED WITH 7100K WHITE LED'S.

LOGO:

ALUM. PAN FABRICATED LOGO FACE - RT.M. PMS #557 C GREEN
ALUM. CHANNEL FABRICATED LOGO RETURNS - RT.M. PMS #557 C GREEN.

ROUT-OUT, PUSH-THRU 3/4" THK. CLEAR ACRYLIC LOGO GRAPHICS.
1ST. SURFACE 3M #3630-20 WHITE & 2ND. SURFACE WHITE DIFFUSER.
INTERNALLY ILLUMINATED WITH 7100K WHITE LED'S.

NEW CONCRETE PAD, STEEL & FOUNDATION
G.C. TO PROVIDE PRIMARY ELECTRICAL



B

D/F MONUMENT - NEW

ONE (1) REQUIRED - MANUFACTURE AND INSTALL

SCALE: 1/4" = 1'-0"

SQ. FT.: 82.12

SADDLE CREEK

13-1438 RB

Sheet 14 of 26

SADDLE CREEK - PERMIT

7509 POPLAR AVE.
GERMANTOWN, TN
38138

Asst. P.J. STAN MACRUM
Coordinator JAMIE MACRUM

Designer P. AGUIAR
Date 11/18/13

Client	
Series	
Estimating	
App	
Location	
Engineering	

ACKNOWLEDGE: I HEREBY REPRESENT AND WARRANT THAT THE INFORMATION CONTAINED HEREIN IS TRUE AND CORRECT TO THE BEST OF MY KNOWLEDGE AND BELIEF. I AM NOT PROVIDING ANY GUARANTEE OR WARRANTY OF ANY KIND, EXPRESS OR IMPLIED, FOR THE INFORMATION CONTAINED HEREIN. I AM NOT PROVIDING ANY GUARANTEE OR WARRANTY OF ANY KIND, EXPRESS OR IMPLIED, FOR THE INFORMATION CONTAINED HEREIN.

PERMIT INFORMATION: PERMITTED FOR CUSTOMER PROVIDED PERMITS ARE OBTAINED FROM THE APPROPRIATE AGENCIES AND ALL NECESSARY FEES ARE PAID.

PERMIT INFORMATION: PERMITTED FOR CUSTOMER PROVIDED PERMITS ARE OBTAINED FROM THE APPROPRIATE AGENCIES AND ALL NECESSARY FEES ARE PAID.

PERMIT INFORMATION: PERMITTED FOR CUSTOMER PROVIDED PERMITS ARE OBTAINED FROM THE APPROPRIATE AGENCIES AND ALL NECESSARY FEES ARE PAID.

PERMIT INFORMATION: PERMITTED FOR CUSTOMER PROVIDED PERMITS ARE OBTAINED FROM THE APPROPRIATE AGENCIES AND ALL NECESSARY FEES ARE PAID.

PERMIT INFORMATION: PERMITTED FOR CUSTOMER PROVIDED PERMITS ARE OBTAINED FROM THE APPROPRIATE AGENCIES AND ALL NECESSARY FEES ARE PAID.

PERMIT INFORMATION: PERMITTED FOR CUSTOMER PROVIDED PERMITS ARE OBTAINED FROM THE APPROPRIATE AGENCIES AND ALL NECESSARY FEES ARE PAID.

PERMIT INFORMATION: PERMITTED FOR CUSTOMER PROVIDED PERMITS ARE OBTAINED FROM THE APPROPRIATE AGENCIES AND ALL NECESSARY FEES ARE PAID.

PERMIT INFORMATION: PERMITTED FOR CUSTOMER PROVIDED PERMITS ARE OBTAINED FROM THE APPROPRIATE AGENCIES AND ALL NECESSARY FEES ARE PAID.

PERMIT INFORMATION: PERMITTED FOR CUSTOMER PROVIDED PERMITS ARE OBTAINED FROM THE APPROPRIATE AGENCIES AND ALL NECESSARY FEES ARE PAID.

PERMIT INFORMATION: PERMITTED FOR CUSTOMER PROVIDED PERMITS ARE OBTAINED FROM THE APPROPRIATE AGENCIES AND ALL NECESSARY FEES ARE PAID.

PERMIT INFORMATION: PERMITTED FOR CUSTOMER PROVIDED PERMITS ARE OBTAINED FROM THE APPROPRIATE AGENCIES AND ALL NECESSARY FEES ARE PAID.

PERMIT INFORMATION: PERMITTED FOR CUSTOMER PROVIDED PERMITS ARE OBTAINED FROM THE APPROPRIATE AGENCIES AND ALL NECESSARY FEES ARE PAID.

PERMIT INFORMATION: PERMITTED FOR CUSTOMER PROVIDED PERMITS ARE OBTAINED FROM THE APPROPRIATE AGENCIES AND ALL NECESSARY FEES ARE PAID.

PERMIT INFORMATION: PERMITTED FOR CUSTOMER PROVIDED PERMITS ARE OBTAINED FROM THE APPROPRIATE AGENCIES AND ALL NECESSARY FEES ARE PAID.

PERMIT INFORMATION: PERMITTED FOR CUSTOMER PROVIDED PERMITS ARE OBTAINED FROM THE APPROPRIATE AGENCIES AND ALL NECESSARY FEES ARE PAID.

PERMIT INFORMATION: PERMITTED FOR CUSTOMER PROVIDED PERMITS ARE OBTAINED FROM THE APPROPRIATE AGENCIES AND ALL NECESSARY FEES ARE PAID.

PERMIT INFORMATION: PERMITTED FOR CUSTOMER PROVIDED PERMITS ARE OBTAINED FROM THE APPROPRIATE AGENCIES AND ALL NECESSARY FEES ARE PAID.

PERMIT INFORMATION: PERMITTED FOR CUSTOMER PROVIDED PERMITS ARE OBTAINED FROM THE APPROPRIATE AGENCIES AND ALL NECESSARY FEES ARE PAID.

PERMIT INFORMATION: PERMITTED FOR CUSTOMER PROVIDED PERMITS ARE OBTAINED FROM THE APPROPRIATE AGENCIES AND ALL NECESSARY FEES ARE PAID.

Chandler Signs

1381 Moon Way
SARASOTA, FL 34236
888-242-2000

1710 Sun Valley, Ste 200
San Antonio, TX 78232
214-340-0079

1800 South Meadows, Ste 200
Lubbock, TX 79401
806-778-0079

1284 West 10th Street
Tulsa, OK 74106
918-481-2000

11100 South Loop West
Houston, TX 77054
281-481-2000

11100 South Loop West
Houston, TX 77054
281-481-2000

11100 South Loop West
Houston, TX 77054
281-481-2000

11100 South Loop West
Houston, TX 77054
281-481-2000

11100 South Loop West
Houston, TX 77054
281-481-2000

11100 South Loop West
Houston, TX 77054
281-481-2000

11100 South Loop West
Houston, TX 77054
281-481-2000

11100 South Loop West
Houston, TX 77054
281-481-2000

FINAL ELECTRICAL CONNECTION BY CUSTOMER

UL

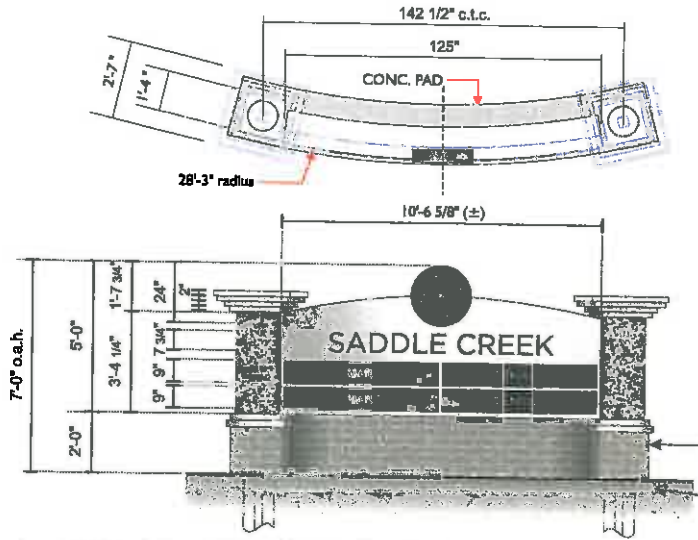


AFTER



BEFORE

REMOVE & DISCARD EXISTING MONUMENT STRUCTURE.



5" DEEP ALUM. FABRICATED CUSTOM RADIUS FACED CABINET - PTD. WHITE.

"SADDLE CREEK"
ROUT-OUT, PUSH-THRU 3/4" THK. CLEAR ACRYLIC COPY.
1ST. SURFACE 3M #3630-22 BLACK & 2ND. SURFACE WHITE DIFFUSER.
INTERNALLY ILLUMINATED WITH 7100K WHITE LED'S.

LOGO :
ALUM. PAN FABRICATED LOGO FACE - PTD. SATIN BLACK
ALUM. CHANNEL FABRICATED LOGO RETURNS - PT.M. PMS #57 C GREEN

ROUT-OUT, PUSH-THRU 3/4" THK. CLEAR ACRYLIC LOGO GRAPHICS.
1ST. SURFACE 3M #3630-20 WHITE & 2ND. SURFACE WHITE DIFFUSER.
INTERNALLY ILLUMINATED WITH 7100K WHITE LED'S.

TENANT PANELS:
1" DEEP ALUM. FABRICATED TENANT PAN-PANELS PTD. BLACK.
FUTURE TENANT NAMES ARE TO BE ROUT-OUT SHO-THRU
WHITE ACRYLIC. (FUTURE W.O.)
INTERNALLY ILLUMINATED WITH 7100K WHITE LED'S.

NEW BRICK MONUMENT STRUCTURE & ALUM. FABRICATED DECORATIVE CAPS .

NEW CONCRETE PAD WITH #3 REBAR AT 12" CENTERS.
NEW STEEL SUPPORTS & CONCRETE PIERS REQUIRED.

G.C. TO PROVIDE PRIMARY ELECTRICAL

A1 A2

S/F ENTRY MONUMENT NEW

TWO (2) REQUIRED - MANUFACTURE AND INSTALL

SCALE: 1/4" = 1'-0"

SQ. FT.: 52.75 EA.

13-1438 R6	
Sheet	13 of 25
SADDLE CREEK - PERMIT	
7808 POPLAR AVE. GERMANTOWN, TN 38138	
Arch. E.q.	STAN MACRUM
Coordinator	JAMIE MACRUM
Designer	P. AGUIAR
Date	11/16/13

Client	
Estimate	
Estimating	
Art	
Manufact	
Engineering	

ALL WORKSHOPS: UPDATED ALL BUILDING BLUEPRINTS :
REPLACED 11" W/ 12" DEGREE ANGLE LEFT OPTION
2 - 10" & 12" W/ 12" DEGREE ANGLE LEFT OPTION
CUSTOMARY BRUSH GLOSS;
CONTOURWORK: REVIEWED FOR CUSTOMER APPROVAL
INCLUDING FOLLOWING CHANGES: TIGHTENING
MESH.

FOR ANY OTHER MATERIALS, DIMENSIONS AND
SPECIFICATIONS, PLEASE CONTACT US AT THE
OFFICE OF CHANDLER SIGNS.

FOR ANY OTHER MATERIALS, DIMENSIONS AND
SPECIFICATIONS, PLEASE CONTACT US AT THE
OFFICE OF CHANDLER SIGNS.

FOR ANY OTHER MATERIALS, DIMENSIONS AND
SPECIFICATIONS, PLEASE CONTACT US AT THE
OFFICE OF CHANDLER SIGNS.

FOR ANY OTHER MATERIALS, DIMENSIONS AND
SPECIFICATIONS, PLEASE CONTACT US AT THE
OFFICE OF CHANDLER SIGNS.

FOR ANY OTHER MATERIALS, DIMENSIONS AND
SPECIFICATIONS, PLEASE CONTACT US AT THE
OFFICE OF CHANDLER SIGNS.

FOR ANY OTHER MATERIALS, DIMENSIONS AND
SPECIFICATIONS, PLEASE CONTACT US AT THE
OFFICE OF CHANDLER SIGNS.

FOR ANY OTHER MATERIALS, DIMENSIONS AND
SPECIFICATIONS, PLEASE CONTACT US AT THE
OFFICE OF CHANDLER SIGNS.

FOR ANY OTHER MATERIALS, DIMENSIONS AND
SPECIFICATIONS, PLEASE CONTACT US AT THE
OFFICE OF CHANDLER SIGNS.

FOR ANY OTHER MATERIALS, DIMENSIONS AND
SPECIFICATIONS, PLEASE CONTACT US AT THE
OFFICE OF CHANDLER SIGNS.

FOR ANY OTHER MATERIALS, DIMENSIONS AND
SPECIFICATIONS, PLEASE CONTACT US AT THE
OFFICE OF CHANDLER SIGNS.

FOR ANY OTHER MATERIALS, DIMENSIONS AND
SPECIFICATIONS, PLEASE CONTACT US AT THE
OFFICE OF CHANDLER SIGNS.

FOR ANY OTHER MATERIALS, DIMENSIONS AND
SPECIFICATIONS, PLEASE CONTACT US AT THE
OFFICE OF CHANDLER SIGNS.

FOR ANY OTHER MATERIALS, DIMENSIONS AND
SPECIFICATIONS, PLEASE CONTACT US AT THE
OFFICE OF CHANDLER SIGNS.

FOR ANY OTHER MATERIALS, DIMENSIONS AND
SPECIFICATIONS, PLEASE CONTACT US AT THE
OFFICE OF CHANDLER SIGNS.

FOR ANY OTHER MATERIALS, DIMENSIONS AND
SPECIFICATIONS, PLEASE CONTACT US AT THE
OFFICE OF CHANDLER SIGNS.

FOR ANY OTHER MATERIALS, DIMENSIONS AND
SPECIFICATIONS, PLEASE CONTACT US AT THE
OFFICE OF CHANDLER SIGNS.

FOR ANY OTHER MATERIALS, DIMENSIONS AND
SPECIFICATIONS, PLEASE CONTACT US AT THE
OFFICE OF CHANDLER SIGNS.

FOR ANY OTHER MATERIALS, DIMENSIONS AND
SPECIFICATIONS, PLEASE CONTACT US AT THE
OFFICE OF CHANDLER SIGNS.

Chandler Signs

2383 Moore Hwy Dallas, TX 75215
974-962-2800 Fax 974-962-2800

27412 Elm Ridge, Box 200 New Canaan, TX 75225
972-388-2800 Fax 972-388-4314

623 Lyndon Avenue, Box 204 Lindale, TX 75241
972-479-2870 Fax 972-472-2813

2804 Green Hill Public Circle Rowlett, TX 75087
972-428-2100 Fax 972-428-2100

21 Woodford Park Court Rowlett, TX 75087
972-421-2921 Fax 972-421-2724

240, Box 125 200 Grand Blvd. Arlington, TX 76010
817-402-2100 Fax 817-402-2100

1273 Park Center Drive, Suite C Vidor, TX 75781
781-667-7000 Fax 781-667-7511

FINAL ELECTRICAL CONNECTION BY CUSTOMER

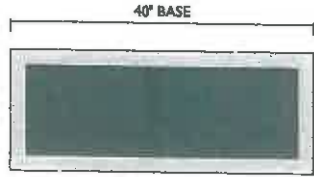
FINAL ELECTRICAL CONNECTION BY CUSTOMER

FINAL ELECTRICAL CONNECTION BY CUSTOMER

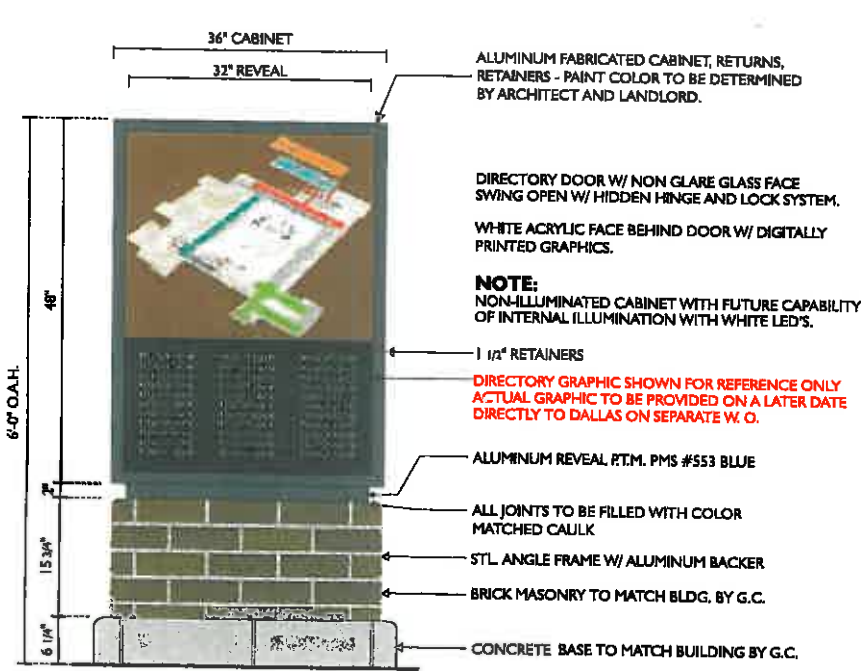
FINAL ELECTRICAL CONNECTION BY CUSTOMER

FINAL ELECTRICAL CONNECTION BY CUSTOMER

FINAL ELECTRICAL CONNECTION BY CUSTOMER



TOP VIEW



FRONT VIEW

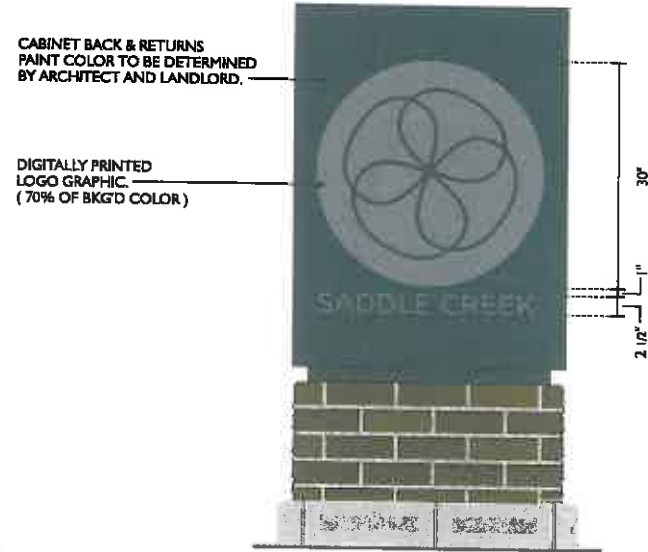


SIDE VIEW

ENGINEERING

(1) x 4" (.38) O.D., .237" WALL SQ. STEEL TUBE REQUIRED
 (1) x 14" DIA. 4'-6" DEEP FOUNDATIONS REQUIRED W/ 3000 PSI CONCRETE.

NOTE: ENGINEERING DATA IS FOR 80 MPH. WIND LOADS.



BACK VIEW

E PEDESTRIAN DIRECTORY SIGN 3/4"=1'-0"
 (2) - TWO REQD. - MANUFACTURE & INSTALL. 18.75 SQ. FT.

SADDLE CREEK

13-1438 RB

Sheet 18 of 25

SADDLE CREEK - PERMIT

7508 POPLAR AVE.
 GERMANTOWN, TN
 38138

Aut. Rep. STAN MACRUM
 Draftsman JAMIE MACRUM
 Designer P. AGUIAR
 Date 11/18/13

Client
 Scale
 Estimating
 Job
 Landmark
 Engineering

REVISIONS: UPDATED ALL MISSING DIMENSIONS - NOTED LAYOUT TYPING ERRORS, LEFT OPTION 1, 2, 3, 4, 5, 6, 7, 8, 9, 10, 11, 12, 13, 14, 15, 16, 17, 18, 19, 20, 21, 22, 23, 24, 25, 26, 27, 28, 29, 30, 31, 32, 33, 34, 35, 36, 37, 38, 39, 40, 41, 42, 43, 44, 45, 46, 47, 48, 49, 50, 51, 52, 53, 54, 55, 56, 57, 58, 59, 60, 61, 62, 63, 64, 65, 66, 67, 68, 69, 70, 71, 72, 73, 74, 75, 76, 77, 78, 79, 80, 81, 82, 83, 84, 85, 86, 87, 88, 89, 90, 91, 92, 93, 94, 95, 96, 97, 98, 99, 100, 101, 102, 103, 104, 105, 106, 107, 108, 109, 110, 111, 112, 113, 114, 115, 116, 117, 118, 119, 120, 121, 122, 123, 124, 125, 126, 127, 128, 129, 130, 131, 132, 133, 134, 135, 136, 137, 138, 139, 140, 141, 142, 143, 144, 145, 146, 147, 148, 149, 150, 151, 152, 153, 154, 155, 156, 157, 158, 159, 160, 161, 162, 163, 164, 165, 166, 167, 168, 169, 170, 171, 172, 173, 174, 175, 176, 177, 178, 179, 180, 181, 182, 183, 184, 185, 186, 187, 188, 189, 190, 191, 192, 193, 194, 195, 196, 197, 198, 199, 200, 201, 202, 203, 204, 205, 206, 207, 208, 209, 210, 211, 212, 213, 214, 215, 216, 217, 218, 219, 220, 221, 222, 223, 224, 225, 226, 227, 228, 229, 230, 231, 232, 233, 234, 235, 236, 237, 238, 239, 240, 241, 242, 243, 244, 245, 246, 247, 248, 249, 250, 251, 252, 253, 254, 255, 256, 257, 258, 259, 260, 261, 262, 263, 264, 265, 266, 267, 268, 269, 270, 271, 272, 273, 274, 275, 276, 277, 278, 279, 280, 281, 282, 283, 284, 285, 286, 287, 288, 289, 290, 291, 292, 293, 294, 295, 296, 297, 298, 299, 300, 301, 302, 303, 304, 305, 306, 307, 308, 309, 310, 311, 312, 313, 314, 315, 316, 317, 318, 319, 320, 321, 322, 323, 324, 325, 326, 327, 328, 329, 330, 331, 332, 333, 334, 335, 336, 337, 338, 339, 340, 341, 342, 343, 344, 345, 346, 347, 348, 349, 350, 351, 352, 353, 354, 355, 356, 357, 358, 359, 360, 361, 362, 363, 364, 365, 366, 367, 368, 369, 370, 371, 372, 373, 374, 375, 376, 377, 378, 379, 380, 381, 382, 383, 384, 385, 386, 387, 388, 389, 390, 391, 392, 393, 394, 395, 396, 397, 398, 399, 400, 401, 402, 403, 404, 405, 406, 407, 408, 409, 410, 411, 412, 413, 414, 415, 416, 417, 418, 419, 420, 421, 422, 423, 424, 425, 426, 427, 428, 429, 430, 431, 432, 433, 434, 435, 436, 437, 438, 439, 440, 441, 442, 443, 444, 445, 446, 447, 448, 449, 450, 451, 452, 453, 454, 455, 456, 457, 458, 459, 460, 461, 462, 463, 464, 465, 466, 467, 468, 469, 470, 471, 472, 473, 474, 475, 476, 477, 478, 479, 480, 481, 482, 483, 484, 485, 486, 487, 488, 489, 490, 491, 492, 493, 494, 495, 496, 497, 498, 499, 500, 501, 502, 503, 504, 505, 506, 507, 508, 509, 510, 511, 512, 513, 514, 515, 516, 517, 518, 519, 520, 521, 522, 523, 524, 525, 526, 527, 528, 529, 530, 531, 532, 533, 534, 535, 536, 537, 538, 539, 540, 541, 542, 543, 544, 545, 546, 547, 548, 549, 550, 551, 552, 553, 554, 555, 556, 557, 558, 559, 560, 561, 562, 563, 564, 565, 566, 567, 568, 569, 570, 571, 572, 573, 574, 575, 576, 577, 578, 579, 580, 581, 582, 583, 584, 585, 586, 587, 588, 589, 590, 591, 592, 593, 594, 595, 596, 597, 598, 599, 600, 601, 602, 603, 604, 605, 606, 607, 608, 609, 610, 611, 612, 613, 614, 615, 616, 617, 618, 619, 620, 621, 622, 623, 624, 625, 626, 627, 628, 629, 630, 631, 632, 633, 634, 635, 636, 637, 638, 639, 640, 641, 642, 643, 644, 645, 646, 647, 648, 649, 650, 651, 652, 653, 654, 655, 656, 657, 658, 659, 660, 661, 662, 663, 664, 665, 666, 667, 668, 669, 670, 671, 672, 673, 674, 675, 676, 677, 678, 679, 680, 681, 682, 683, 684, 685, 686, 687, 688, 689, 690, 691, 692, 693, 694, 695, 696, 697, 698, 699, 700, 701, 702, 703, 704, 705, 706, 707, 708, 709, 710, 711, 712, 713, 714, 715, 716, 717, 718, 719, 720, 721, 722, 723, 724, 725, 726, 727, 728, 729, 730, 731, 732, 733, 734, 735, 736, 737, 738, 739, 740, 741, 742, 743, 744, 745, 746, 747, 748, 749, 750, 751, 752, 753, 754, 755, 756, 757, 758, 759, 760, 761, 762, 763, 764, 765, 766, 767, 768, 769, 770, 771, 772, 773, 774, 775, 776, 777, 778, 779, 780, 781, 782, 783, 784, 785, 786, 787, 788, 789, 790, 791, 792, 793, 794, 795, 796, 797, 798, 799, 800, 801, 802, 803, 804, 805, 806, 807, 808, 809, 810, 811, 812, 813, 814, 815, 816, 817, 818, 819, 820, 821, 822, 823, 824, 825, 826, 827, 828, 829, 830, 831, 832, 833, 834, 835, 836, 837, 838, 839, 840, 841, 842, 843, 844, 845, 846, 847, 848, 849, 850, 851, 852, 853, 854, 855, 856, 857, 858, 859, 860, 861, 862, 863, 864, 865, 866, 867, 868, 869, 870, 871, 872, 873, 874, 875, 876, 877, 878, 879, 880, 881, 882, 883, 884, 885, 886, 887, 888, 889, 890, 891, 892, 893, 894, 895, 896, 897, 898, 899, 900, 901, 902, 903, 904, 905, 906, 907, 908, 909, 910, 911, 912, 913, 914, 915, 916, 917, 918, 919, 920, 921, 922, 923, 924, 925, 926, 927, 928, 929, 930, 931, 932, 933, 934, 935, 936, 937, 938, 939, 940, 941, 942, 943, 944, 945, 946, 947, 948, 949, 950, 951, 952, 953, 954, 955, 956, 957, 958, 959, 960, 961, 962, 963, 964, 965, 966, 967, 968, 969, 970, 971, 972, 973, 974, 975, 976, 977, 978, 979, 980, 981, 982, 983, 984, 985, 986, 987, 988, 989, 990, 991, 992, 993, 994, 995, 996, 997, 998, 999, 1000.

Chandler Signs

2300 River Way Dallas, TX 75241
 214-962-7000 Fax 214-962-2045

17200 Elm Ridge, Ste 300 Dallas, TX 75231
 972-446-1004 Fax 972-446-9224

100 Bremer Avenue, Ste 200 Littleton, CO 80120
 303-479-2675 Fax 303-413-0013

2004 East Hill Point Drive, Suite 1000, Littleton, CO 80120
 303-479-1100 Fax 303-479-1188

27 Whitehead Street, Suite 200, Littleton, CO 80120
 303-479-1781 Fax 303-479-0734

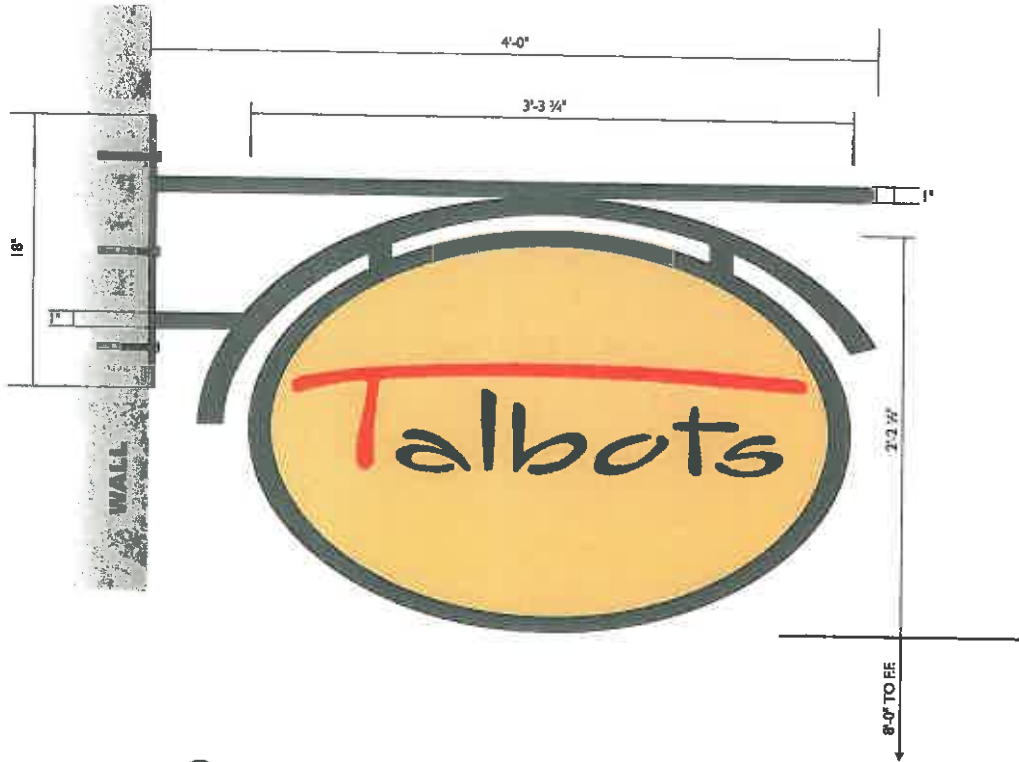
P.O. Box 111, 200 Doral Drive, Littleton, CO 80120
 303-479-1100 Fax 303-479-0734

1231 Park Center Drive, Suite 100, Littleton, CO 80120
 719-967-7000 Fax 719-967-7001

FIJAL ELECTRICAL CONSTRUCTION BY CUSTOMER

OPTION

1



SIGN SUPPORTS 1" x 2" SQ. TUBE ALUM. W/ A 18" x 5" PLAQUE FLUSH MOUNTED TO WALL, PTD PER TENANT LAYOUT.

ATTACH TO WALL W/ NON CORROSIVE HARDWARE AS REQUIRED, PTD. PER TENANT LAYOUT.

CENTRAL SIGN ATTACHED TO BASE W/ 1/2" x 1" WELDED SQ. PIPES PTD. PER TENANT LAYOUT.

CENTRAL FCO. ALUM. PANELS PTD PER TENANT LAYOUT.

Note:
 One Blade Sign per Tenant for tenants
 40 Linear Feet of Frontage or Less,
 Two Blade signs Max. for any tenant.



SIDE VIEW

F D/F BLADE SIGN NON-ILLUM.

1 1/2" = 1'-0"
7.31 = SQ. FT.

NOTE:

ALL BLADE SIGNS PER TENANT LAYOUT NOT TO PROJECT MORE THAN 4" FROM WALL & NOT TO EXCEED 10.00 SQ. FT., ALL FACES TO BE PAINTED ALUMINUM ONLY.

COPY SHOWN FOR VISUAL PURPOSES ONLY

SADDLE CREEK

13-1438 RB

Sheet 17 of 25

SADDLE CREEK - PERMIT

7508 POPLAR AVE. GERMANTOWN, TN 38138

7508 POPLAR AVE. GERMANTOWN, TN 38138

Arch. E.C.P. STAN MACRUM

Coordinator JAMIE MACRUM

Designer R. AGUIAR

Date 11/18/13

Client	
Arch.	
Electrical	
MEP	
Landscaping	
Engineering	

PERMITS: ILLUSTRATED ALL BUILDING PERMITS, MECHANICAL, ELECTRICAL, PLUMBING, AND OTHER PERMITS AS REQUIRED BY LOCAL, STATE, AND FEDERAL AGENCIES. PERMITS ARE THE RESPONSIBILITY OF THE CLIENT. CHANDLER SIGNS WILL BE RESPONSIBLE FOR THE DESIGN AND CONSTRUCTION OF THE SIGNAGE ONLY.

PERMITS: ILLUSTRATED ALL BUILDING PERMITS, MECHANICAL, ELECTRICAL, PLUMBING, AND OTHER PERMITS AS REQUIRED BY LOCAL, STATE, AND FEDERAL AGENCIES. PERMITS ARE THE RESPONSIBILITY OF THE CLIENT. CHANDLER SIGNS WILL BE RESPONSIBLE FOR THE DESIGN AND CONSTRUCTION OF THE SIGNAGE ONLY.

PERMITS: ILLUSTRATED ALL BUILDING PERMITS, MECHANICAL, ELECTRICAL, PLUMBING, AND OTHER PERMITS AS REQUIRED BY LOCAL, STATE, AND FEDERAL AGENCIES. PERMITS ARE THE RESPONSIBILITY OF THE CLIENT. CHANDLER SIGNS WILL BE RESPONSIBLE FOR THE DESIGN AND CONSTRUCTION OF THE SIGNAGE ONLY.

PERMITS: ILLUSTRATED ALL BUILDING PERMITS, MECHANICAL, ELECTRICAL, PLUMBING, AND OTHER PERMITS AS REQUIRED BY LOCAL, STATE, AND FEDERAL AGENCIES. PERMITS ARE THE RESPONSIBILITY OF THE CLIENT. CHANDLER SIGNS WILL BE RESPONSIBLE FOR THE DESIGN AND CONSTRUCTION OF THE SIGNAGE ONLY.

PERMITS: ILLUSTRATED ALL BUILDING PERMITS, MECHANICAL, ELECTRICAL, PLUMBING, AND OTHER PERMITS AS REQUIRED BY LOCAL, STATE, AND FEDERAL AGENCIES. PERMITS ARE THE RESPONSIBILITY OF THE CLIENT. CHANDLER SIGNS WILL BE RESPONSIBLE FOR THE DESIGN AND CONSTRUCTION OF THE SIGNAGE ONLY.

PERMITS: ILLUSTRATED ALL BUILDING PERMITS, MECHANICAL, ELECTRICAL, PLUMBING, AND OTHER PERMITS AS REQUIRED BY LOCAL, STATE, AND FEDERAL AGENCIES. PERMITS ARE THE RESPONSIBILITY OF THE CLIENT. CHANDLER SIGNS WILL BE RESPONSIBLE FOR THE DESIGN AND CONSTRUCTION OF THE SIGNAGE ONLY.

Chandler Signs

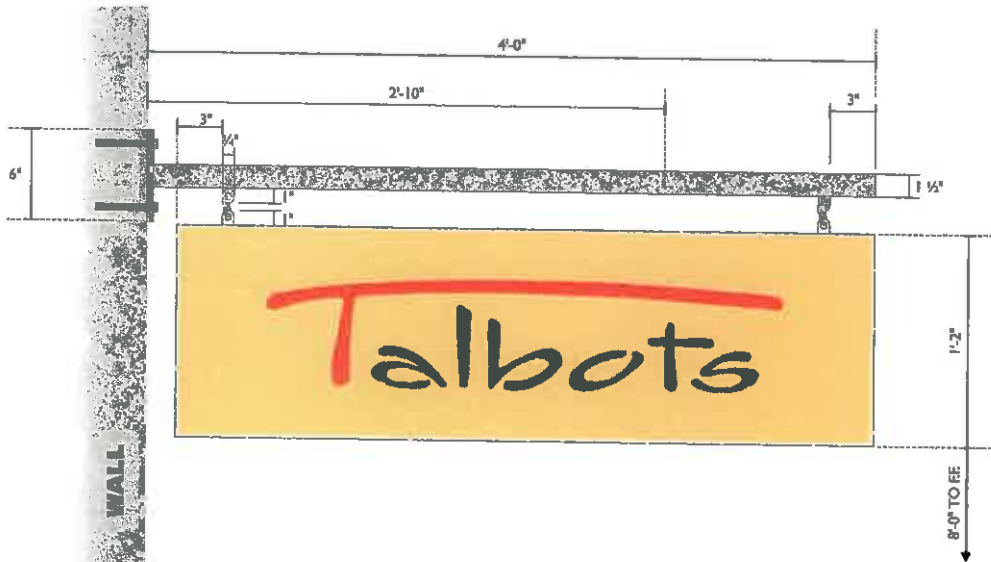
1281 N. Main St. Dallas, TX 75208	Phone: 214-352-2228
1281 N. Main St. Dallas, TX 75208	Phone: 214-352-2228
2729 Dan Patch, Box 130 San Antonio, TX 78203	Phone: 214-352-2228
1281 N. Main St. Dallas, TX 75208	Phone: 214-352-2228
1281 N. Main St. Dallas, TX 75208	Phone: 214-352-2228
1281 N. Main St. Dallas, TX 75208	Phone: 214-352-2228
1281 N. Main St. Dallas, TX 75208	Phone: 214-352-2228
1281 N. Main St. Dallas, TX 75208	Phone: 214-352-2228
1281 N. Main St. Dallas, TX 75208	Phone: 214-352-2228
1281 N. Main St. Dallas, TX 75208	Phone: 214-352-2228

FINAL ELECTRICAL CONNECTION BY CUSTOMER



OPTION

2



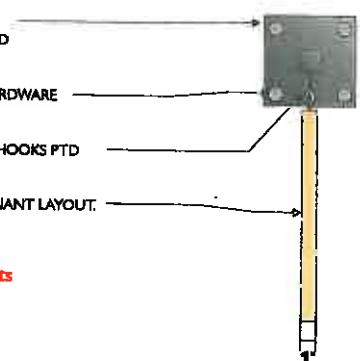
SIGN SUPPORTS 1 1/2" SQ. TUBE ALUM. W/ A 6" PLAQUE FLUSH MOUNTED TO WALL, PTD PER TENANT LAYOUT.

ATTACH TO WALL W/ NON CORROSIVE HARDWARE AS REQUIRED, PTD. PER TENANT LAYOUT.

CENTRAL SIGN ATTACHED TO BASE W/ "S" HOOKS PTD PER TENANT LAYOUT.

CENTRAL SIGN ALUM. PANELS PTD PER TENANT LAYOUT.

Notes:
 One Blade Sign per Tenant for tenants 40 Linear Feet of Frontage or Less,
 Two Blade signs Max. for any tenant.



SIDE VIEW

F D/F BLADE SIGN NON-ILLUM. 1 1/2"=1'-0"
 3.25 = SQ. FT.

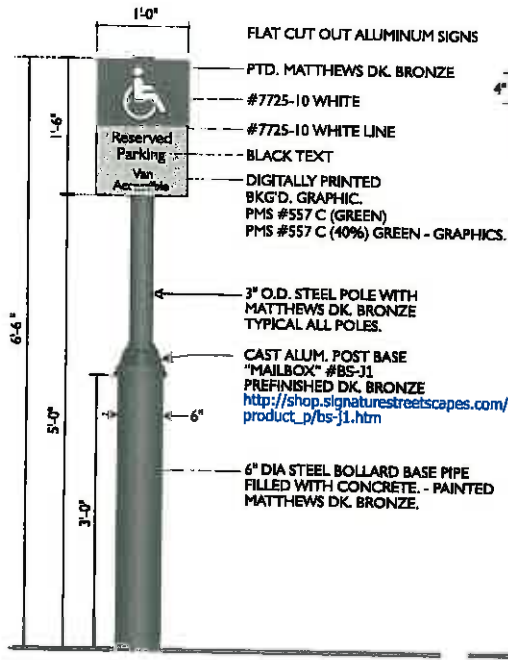
NOTE:

ALL BLADE SIGNS PER TENANT LAYOUT NOT TO PROJECT MORE THAN 4" FROM WALL & NOT TO EXCEED 10.00 SQ. FT., ALL FACES TO BE PAINTED ALUMINUM ONLY.

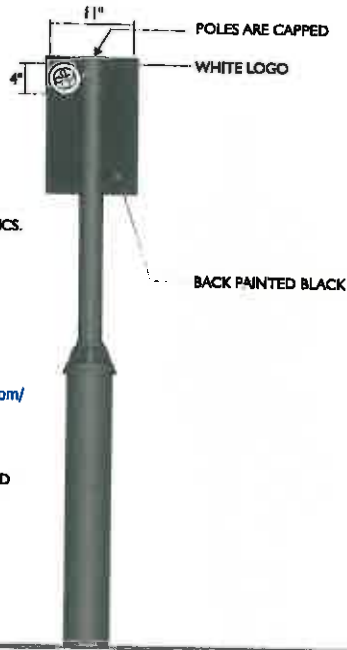
COPY & BACKGROUND COLOR SHOWN FOR VISUAL PURPOSES ONLY

13-1438 RB	
Sheet	18 of 25
SADDLE CREEK - PERMIT	
7509 POPLAR AVE. GERMANTOWN, TN 38138	
Arch. Rep.	STAN MACRUM
Contractor	JAMIE MACRUM
Designer	P. AGUIAR
Date	11/16/13
Client	
Color	
Estimating	
Job	
Landlord	
Engineer	
<p>PERMITTING: UPDATED ALL SIGNAGE PLACEMENTS - UNLAWFUL TENANT SIGNAGE REMOVED PER OPTION 2. NEW 12' SIGNAGE LOCATED PER TENANT LAYOUT. CUSTOMER'S SIGNAGE OK.</p> <p>PERMITTING: REVIEWED WITH CUSTOMER PROVIDED REQUIREMENTS. INCLUDED CHANGING TENANT SIGNAGE AREA.</p> <p>PER SIGNAGE: REVIEWED ALL SIGNAGE AND PROVIDED EXAMPLE SIGN WITH CORRECTIONS OF UNLAWFUL SIGNAGE.</p> <p>PER SIGNAGE: REVIEWED OPTION #2 OF SIGN PLACEMENT. REVIEWED UP TO SIGN TO A CHANGED RESPECTIVE SIGN. SIGN COPY TO BE MADE WITH COPY SIGN TO BE MADE AS INDICATED WITH LED LIGHTING. CUSTOMER PROVIDED PERMIT IF CHANGED TENANT SIGNAGE TO MATCH WITH OWN SIGNAGE. APPROVED SIGNAGE MADE TO ALL INDICATED SIGN PLACEMENTS.</p> <p>PER SIGNAGE: REVIEWED 1/2" X 1/2" TO BE COMPLETELY NEW INCLUDING THE MOUNTING & SIGN. TO BE REVIEWED WITH CUSTOMER PERMIT TO 1/2" SIGNAGE. SIGNAGE TO BE MADE AS INDICATED IN DRAWING.</p> <p>PER SIGNAGE: REVIEWED SIGN COPY. CHANGED BACKS OF SIGNAGE TO 1/2" X 1/2" TO BE MADE WITH WHITE LOGO.</p> <p>PER SIGNAGE: REVIEWED THE SIGNAGE WITH CUSTOMER.</p> <p>PER SIGNAGE: REVIEWED SIGN COPY. CHANGED BACKS OF SIGNAGE TO 1/2" X 1/2" TO BE MADE WITH WHITE LOGO.</p> <p>PER SIGNAGE: CONNECTED LOCATION OF SIGN TO BE REVIEWED WITH CUSTOMER PERMIT TO 1/2" SIGNAGE. SIGNAGE TO BE MADE AS INDICATED WITH LED LIGHTING. CUSTOMER PROVIDED PERMIT IF CHANGED TENANT SIGNAGE TO MATCH WITH OWN SIGNAGE. APPROVED SIGNAGE MADE TO ALL INDICATED SIGN PLACEMENTS.</p>	
<p>Chandler Signs 2014 Hoover Blvd. Nashville, TN 37213 615-463-3000 Fax 615-463-3044</p> <p>6750 Elm Ridge, Ste 300 Knoxville, TN 37921 615-497-1804 Fax 615-497-1814</p> <p>633 Tucker Avenue, Ste 200 Louisville, KY 40204 502-479-9873 Fax 502-413-9813</p> <p>2014 Grand Hill Public Circle Birmingham, AL 35217 857-436-1100 Fax 857-436-1100</p> <p>37 Industrial Park Court Greenville, SC 29614 864-695-7982 Fax 812-349-9241</p> <p>P.O. Box 138 304 Grand Oaks Marietta, GA 30066 404-862-7376 Fax 404-862-7376</p> <p>6228 Park Center Drive, Suite C Vista, CA 92083 760-947-7982 Fax 760-947-7922</p>	
<p>FINAL ELECTRICAL CONNECTION BY CUSTOMER</p>	

FRONT VIEW



BACK VIEW



D/F REGULATORY SIGNS

10 - (TEN) TOTAL REQ'D. - MANUFACTURE & INSTALL

3/4" = 1'-0"

- (1) x 2 3/8" O.D. .237" WALL SQ. STEEL TUBE REQUIRED
- (1) x 14" DIA. 2'-0" DEEP FOUNDATIONS REQUIRED WITH 3000 PSI CONCRETE.

NOTE: ENGINEERING DATA IS FOR 80 MPH. WIND LOADS. DATA IS FOR ONE SIGN ONLY.



INSTALL DETAIL

CONFIRM EXACT INSTALL LOCATION

1/8" = 1'-0" ±

SADDLE CREEK

13-1438 R8
Sheet 20 of 25
SADDLE CREEK - PERMIT
7509 POPLAR AVE. GERMANTOWN, TN 38138
Asst. Sup. BTAN MACRUM Coordinator JAMIE MACRUM
Designer P. AGUIAR
Date 11/16/13

Client	
State	
Engineering	
Job	
Location	
Engineering	

FOR YOUR PROTECTION AND ALL INFORMATION CONCERNING THE QUALITY OF THE WORK, WE REQUEST THAT YOU REVIEW THE PERMIT AND ALL ATTACHED DOCUMENTS AND SPECIFICATIONS. WE REQUEST THAT YOU REVIEW THE PERMIT AND ALL ATTACHED DOCUMENTS AND SPECIFICATIONS. WE REQUEST THAT YOU REVIEW THE PERMIT AND ALL ATTACHED DOCUMENTS AND SPECIFICATIONS.

Chandler Signs

3281 Major Way
249-660-3800

3720 Bus Park, Ste 300
237-644-5881

1800 Industrial Blvd, Ste 200
304-477-0014

1504 South 880 Federal Circle
303-426-1100

2700 Woodford Park Court
860-965-7921

1200 Park Center Drive, WMYC
782-457-7997

Baby, TN 37029
Fax 615-652-0844

San Antonio, TX 78211
Fax 214-349-8734

Madison, TN 37050
Fax 615-414-0433

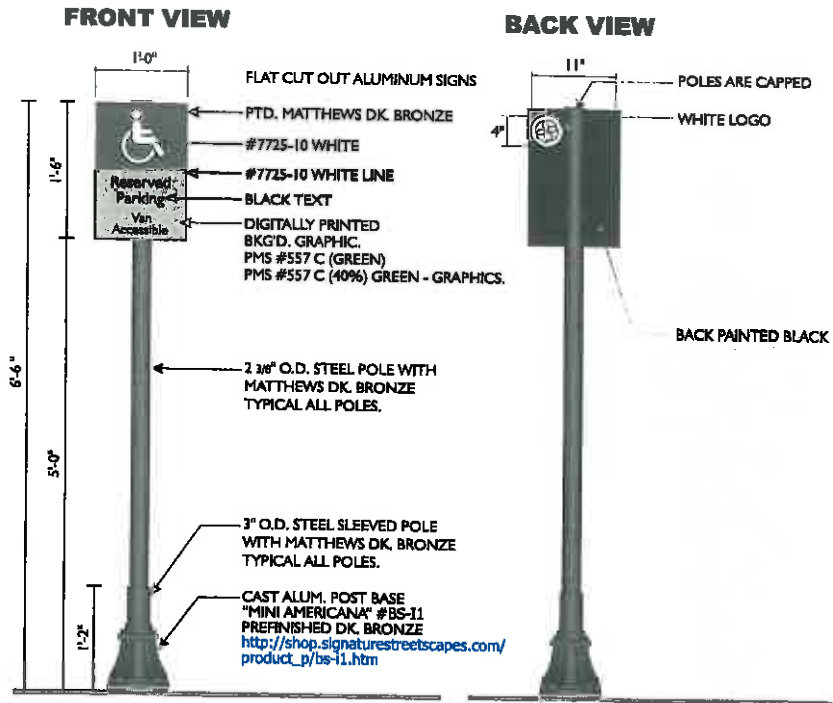
Overseas, TN 37037
Fax 602-424-1189

Dyersburg, TN 38016
Fax 731-688-8734

Prichard, TN 37134
Fax 615-443-8333

Waco, TX 76798
Fax 767-865-7632

FINAL ELECTRICAL CONNECTION BY CUSTOMER



D/F REGULATORY SIGNS **3/4"=1'-0"**
 3 - (THREE) TOTAL REQ'D. - MANUFACTURE & INSTALL

ENGINEERING

- (1) x 2 3/8" O.D. .237" WALL SQ. STEEL TUBE REQUIRED
- (1) x 14" DIA. 2'-0" DEEP FOUNDATIONS REQUIRED WITH 3000 PSI CONCRETE.

NOTE: ENGINEERING DATA IS FOR 80 MPH. WIND LOADS. DATA IS FOR ONE SIGN ONLY.



INSTALL DETAIL **1/8"=1'-0" ±**
 CONFIRM EXACT INSTALL LOCATION

13-1438 RB	
Sheet	21 of 25
SADDLE CREEK - PERMIT	
7508 POPLAR AVE. GERMANTOWN, TN 38138	
Arch. Rsp.	STAN MACRUM
Coordinator	JAMIE MACRUM
Designer	P. AGUIAR
Date	11/16/13

Client	
Scale	
Engineering	
Ad.	
Landscap	
Engineering	

PERMITTING: ILLUSTRATED ALL EXISTING UTILITIES. THE LOCATION OF UTILITIES SHOWN ARE NOT GUARANTEED. A UTILITY LOCATOR SHOULD BE USED TO VERIFY THE LOCATION OF UTILITIES PRIOR TO CONSTRUCTION.

PERMITTING: ILLUSTRATED THE EXISTING DRIVEWAY. THE EXISTING DRIVEWAY IS NOT GUARANTEED. A UTILITY LOCATOR SHOULD BE USED TO VERIFY THE LOCATION OF UTILITIES PRIOR TO CONSTRUCTION.

PERMITTING: ILLUSTRATED THE EXISTING DRIVEWAY. THE EXISTING DRIVEWAY IS NOT GUARANTEED. A UTILITY LOCATOR SHOULD BE USED TO VERIFY THE LOCATION OF UTILITIES PRIOR TO CONSTRUCTION.

PERMITTING: ILLUSTRATED THE EXISTING DRIVEWAY. THE EXISTING DRIVEWAY IS NOT GUARANTEED. A UTILITY LOCATOR SHOULD BE USED TO VERIFY THE LOCATION OF UTILITIES PRIOR TO CONSTRUCTION.

PERMITTING: ILLUSTRATED THE EXISTING DRIVEWAY. THE EXISTING DRIVEWAY IS NOT GUARANTEED. A UTILITY LOCATOR SHOULD BE USED TO VERIFY THE LOCATION OF UTILITIES PRIOR TO CONSTRUCTION.

PERMITTING: ILLUSTRATED THE EXISTING DRIVEWAY. THE EXISTING DRIVEWAY IS NOT GUARANTEED. A UTILITY LOCATOR SHOULD BE USED TO VERIFY THE LOCATION OF UTILITIES PRIOR TO CONSTRUCTION.

PERMITTING: ILLUSTRATED THE EXISTING DRIVEWAY. THE EXISTING DRIVEWAY IS NOT GUARANTEED. A UTILITY LOCATOR SHOULD BE USED TO VERIFY THE LOCATION OF UTILITIES PRIOR TO CONSTRUCTION.

PERMITTING: ILLUSTRATED THE EXISTING DRIVEWAY. THE EXISTING DRIVEWAY IS NOT GUARANTEED. A UTILITY LOCATOR SHOULD BE USED TO VERIFY THE LOCATION OF UTILITIES PRIOR TO CONSTRUCTION.

PERMITTING: ILLUSTRATED THE EXISTING DRIVEWAY. THE EXISTING DRIVEWAY IS NOT GUARANTEED. A UTILITY LOCATOR SHOULD BE USED TO VERIFY THE LOCATION OF UTILITIES PRIOR TO CONSTRUCTION.

PERMITTING: ILLUSTRATED THE EXISTING DRIVEWAY. THE EXISTING DRIVEWAY IS NOT GUARANTEED. A UTILITY LOCATOR SHOULD BE USED TO VERIFY THE LOCATION OF UTILITIES PRIOR TO CONSTRUCTION.

PERMITTING: ILLUSTRATED THE EXISTING DRIVEWAY. THE EXISTING DRIVEWAY IS NOT GUARANTEED. A UTILITY LOCATOR SHOULD BE USED TO VERIFY THE LOCATION OF UTILITIES PRIOR TO CONSTRUCTION.

PERMITTING: ILLUSTRATED THE EXISTING DRIVEWAY. THE EXISTING DRIVEWAY IS NOT GUARANTEED. A UTILITY LOCATOR SHOULD BE USED TO VERIFY THE LOCATION OF UTILITIES PRIOR TO CONSTRUCTION.

PERMITTING: ILLUSTRATED THE EXISTING DRIVEWAY. THE EXISTING DRIVEWAY IS NOT GUARANTEED. A UTILITY LOCATOR SHOULD BE USED TO VERIFY THE LOCATION OF UTILITIES PRIOR TO CONSTRUCTION.

PERMITTING: ILLUSTRATED THE EXISTING DRIVEWAY. THE EXISTING DRIVEWAY IS NOT GUARANTEED. A UTILITY LOCATOR SHOULD BE USED TO VERIFY THE LOCATION OF UTILITIES PRIOR TO CONSTRUCTION.

PERMITTING: ILLUSTRATED THE EXISTING DRIVEWAY. THE EXISTING DRIVEWAY IS NOT GUARANTEED. A UTILITY LOCATOR SHOULD BE USED TO VERIFY THE LOCATION OF UTILITIES PRIOR TO CONSTRUCTION.

PERMITTING: ILLUSTRATED THE EXISTING DRIVEWAY. THE EXISTING DRIVEWAY IS NOT GUARANTEED. A UTILITY LOCATOR SHOULD BE USED TO VERIFY THE LOCATION OF UTILITIES PRIOR TO CONSTRUCTION.

PERMITTING: ILLUSTRATED THE EXISTING DRIVEWAY. THE EXISTING DRIVEWAY IS NOT GUARANTEED. A UTILITY LOCATOR SHOULD BE USED TO VERIFY THE LOCATION OF UTILITIES PRIOR TO CONSTRUCTION.

PERMITTING: ILLUSTRATED THE EXISTING DRIVEWAY. THE EXISTING DRIVEWAY IS NOT GUARANTEED. A UTILITY LOCATOR SHOULD BE USED TO VERIFY THE LOCATION OF UTILITIES PRIOR TO CONSTRUCTION.

PERMITTING: ILLUSTRATED THE EXISTING DRIVEWAY. THE EXISTING DRIVEWAY IS NOT GUARANTEED. A UTILITY LOCATOR SHOULD BE USED TO VERIFY THE LOCATION OF UTILITIES PRIOR TO CONSTRUCTION.

PERMITTING: ILLUSTRATED THE EXISTING DRIVEWAY. THE EXISTING DRIVEWAY IS NOT GUARANTEED. A UTILITY LOCATOR SHOULD BE USED TO VERIFY THE LOCATION OF UTILITIES PRIOR TO CONSTRUCTION.

PERMITTING: ILLUSTRATED THE EXISTING DRIVEWAY. THE EXISTING DRIVEWAY IS NOT GUARANTEED. A UTILITY LOCATOR SHOULD BE USED TO VERIFY THE LOCATION OF UTILITIES PRIOR TO CONSTRUCTION.

PERMITTING: ILLUSTRATED THE EXISTING DRIVEWAY. THE EXISTING DRIVEWAY IS NOT GUARANTEED. A UTILITY LOCATOR SHOULD BE USED TO VERIFY THE LOCATION OF UTILITIES PRIOR TO CONSTRUCTION.

PERMITTING: ILLUSTRATED THE EXISTING DRIVEWAY. THE EXISTING DRIVEWAY IS NOT GUARANTEED. A UTILITY LOCATOR SHOULD BE USED TO VERIFY THE LOCATION OF UTILITIES PRIOR TO CONSTRUCTION.

PERMITTING: ILLUSTRATED THE EXISTING DRIVEWAY. THE EXISTING DRIVEWAY IS NOT GUARANTEED. A UTILITY LOCATOR SHOULD BE USED TO VERIFY THE LOCATION OF UTILITIES PRIOR TO CONSTRUCTION.

PERMITTING: ILLUSTRATED THE EXISTING DRIVEWAY. THE EXISTING DRIVEWAY IS NOT GUARANTEED. A UTILITY LOCATOR SHOULD BE USED TO VERIFY THE LOCATION OF UTILITIES PRIOR TO CONSTRUCTION.

PERMITTING: ILLUSTRATED THE EXISTING DRIVEWAY. THE EXISTING DRIVEWAY IS NOT GUARANTEED. A UTILITY LOCATOR SHOULD BE USED TO VERIFY THE LOCATION OF UTILITIES PRIOR TO CONSTRUCTION.

PERMITTING: ILLUSTRATED THE EXISTING DRIVEWAY. THE EXISTING DRIVEWAY IS NOT GUARANTEED. A UTILITY LOCATOR SHOULD BE USED TO VERIFY THE LOCATION OF UTILITIES PRIOR TO CONSTRUCTION.

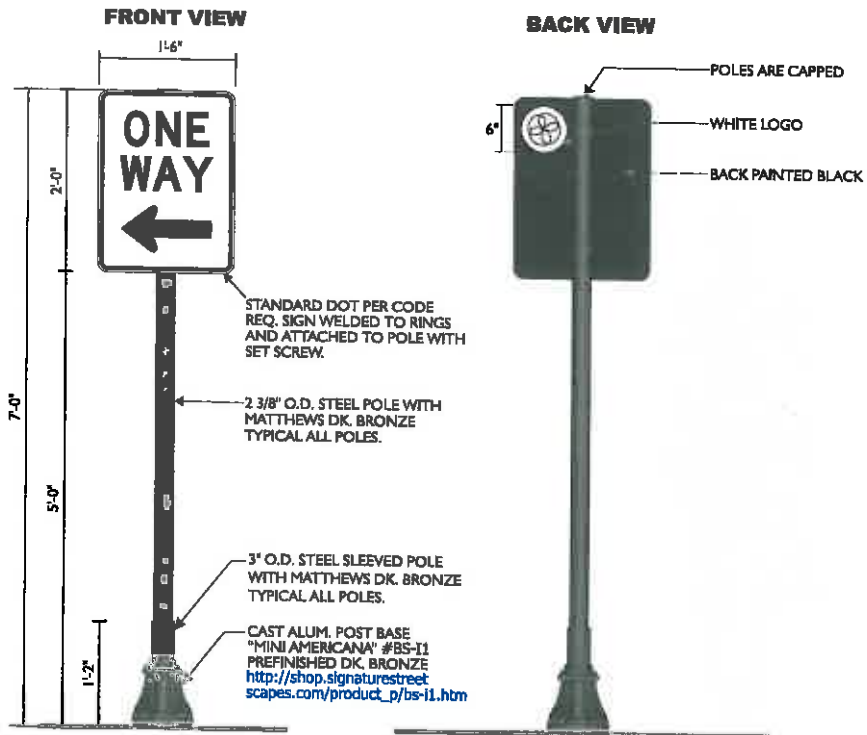
PERMITTING: ILLUSTRATED THE EXISTING DRIVEWAY. THE EXISTING DRIVEWAY IS NOT GUARANTEED. A UTILITY LOCATOR SHOULD BE USED TO VERIFY THE LOCATION OF UTILITIES PRIOR TO CONSTRUCTION.

PERMITTING: ILLUSTRATED THE EXISTING DRIVEWAY. THE EXISTING DRIVEWAY IS NOT GUARANTEED. A UTILITY LOCATOR SHOULD BE USED TO VERIFY THE LOCATION OF UTILITIES PRIOR TO CONSTRUCTION.

Chandler Signs	
2004 Flower Way 255-692-0889	Indian, TN 37133 934-334-8563-1864
11200 Oak Ridge, Mo 380 513-881-0801	San Antonio, TX 78221 Fax 214-518-0726
112 North Avenue, Mo 380 513-881-0801	Lawrenceville, GA 30046 Fax 770-962-0815
2004 Flower Way 255-692-0889	Birmingham, AL 35207 Fax 205-948-1198
27 Waterford Arch Drive 800-251-0781	Durham, NC 27704 Fax 919-286-8734
5100 Sun 151 394 Pearl Drive 913-973-0800	Portland, OR 97221 Fax 503-249-0528
11200 Oak Ridge, Mo 380 513-881-0801	Waco, TX 76798 Fax 787-267-7913

FINAL ELECTRICAL CONNECTION BY CUSTOMER





J1 REGULATORY SIGN 3/4"=1'-0"
1-TOTAL REQ'D. - MANUFACTURE & INSTALL

ENGINEERING

- (1) x 2 3/8" O.D., .237" WALL SQ. STEEL TUBE REQUIRED
- (1) x 14" DIA. 2'-0" DEEP FOUNDATIONS REQUIRED WITH 3000 PSI CONCRETE.

NOTE: ENGINEERING DATA IS FOR 80 MPH. WIND LOADS. DATA IS FOR ONE SIGN ONLY.

INSTALL DETAIL 1/8"=1'-0" ±
CONFIRM EXACT INSTALL LOCATION

13-1438 R6	
Set:	22 of 25
SADDLE CREEK - PERMIT	
7609 POPLAR AVE. GERMANTOWN, TN 38138	
Acct. No.:	STAN MACRUM
Contractor:	JAMIE MACRUM
Designer:	P. AGUIAR
Date:	11/16/13
Client:	
Sales:	
Estimating:	
A/E:	
Landscape:	
Engineering:	

REVISIONS: LISTED ALL REVISIONS AND INDICATED WHAT REVISIONS WERE MADE TO THE ORIGINAL DRAWING. IF ANY CHANGES ARE MADE TO THE ORIGINAL DRAWING, THE CUSTOMER MUST SIGN AND DATE THE REVISIONS.

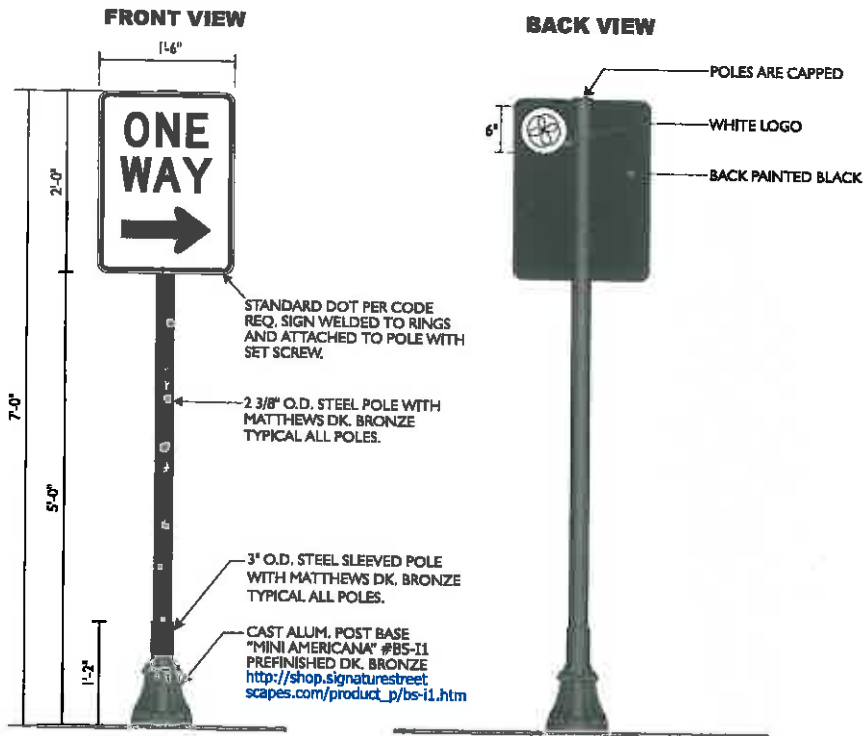
FOR INFORMATION: REVISED FOR CUSTOMER PROVIDED INFORMATION INCLUDING CHANGES TO THE ORIGINAL DRAWING.

FOR INFORMATION: LISTED ALL REVISIONS AND INDICATED WHAT REVISIONS WERE MADE TO THE ORIGINAL DRAWING. IF ANY CHANGES ARE MADE TO THE ORIGINAL DRAWING, THE CUSTOMER MUST SIGN AND DATE THE REVISIONS.

FOR INFORMATION: LISTED ALL REVISIONS AND INDICATED WHAT REVISIONS WERE MADE TO THE ORIGINAL DRAWING. IF ANY CHANGES ARE MADE TO THE ORIGINAL DRAWING, THE CUSTOMER MUST SIGN AND DATE THE REVISIONS.

Chandler Signs	
1383 Peachtree 254-663-3000	Atlanta, GA 30329 Fax 254-663-3000
2713 Dunwoody, Ste 200 254-663-3000	Atlanta, GA 30329 Fax 254-663-3000
200 Peachtree, Ste 200 254-663-3000	Atlanta, GA 30329 Fax 254-663-3000
1384 Peachtree Plaza Circle 254-663-3000	Atlanta, GA 30329 Fax 254-663-3000
17 Peachtree Plaza Circle 254-663-3000	Atlanta, GA 30329 Fax 254-663-3000
170 Peachtree Plaza Circle 254-663-3000	Atlanta, GA 30329 Fax 254-663-3000
170 Peachtree Plaza Circle, Unit 2 254-663-3000	Atlanta, GA 30329 Fax 254-663-3000

FINAL ELECTRICAL CONNECTION BY CUSTOMER



12 REGULATORY SIGN 3/4"=1'-0"

1-TOTAL REQ'D. - MANUFACTURE & INSTALL

ENGINEERING

- (1) x 2 3/8" O.D., .237" WALL SQ. STEEL TUBE REQUIRED
- (1) x 14" DIA. 2'-0" DEEP FOUNDATIONS REQUIRED WITH 3000 PSI CONCRETE.

NOTE: ENGINEERING DATA IS FOR 80 MPH. WIND LOADS. DATA IS FOR ONE SIGN ONLY.



INSTALL DETAIL

CONFIRM EXACT INSTALL LOCATION

1/8"=1'-0" ±

SADDLE CREEK

13-1438 R8	
Sheet	23 of 25
SADDLE CREEK - PERMIT	
7508 POPLAR AVE. GERMANTOWN, TN 38138	
Arch. Rep.	STAN MACRUM
Designer	JAMIE MACRUM
Designer	R. AGUIAR
Date	11/18/13
Client	
Station	
Estimating	
Asst.	
Landscaping	
Engineering	
<p>1. ALL DIMENSIONS UNLESS OTHERWISE SPECIFIED ARE IN FEET AND INCHES. DIMENSIONS SHALL BE TO CENTER UNLESS OTHERWISE SPECIFIED.</p> <p>2. ALL DIMENSIONS SHALL BE TO CENTER UNLESS OTHERWISE SPECIFIED.</p> <p>3. ALL DIMENSIONS SHALL BE TO CENTER UNLESS OTHERWISE SPECIFIED.</p> <p>4. ALL DIMENSIONS SHALL BE TO CENTER UNLESS OTHERWISE SPECIFIED.</p> <p>5. ALL DIMENSIONS SHALL BE TO CENTER UNLESS OTHERWISE SPECIFIED.</p> <p>6. ALL DIMENSIONS SHALL BE TO CENTER UNLESS OTHERWISE SPECIFIED.</p> <p>7. ALL DIMENSIONS SHALL BE TO CENTER UNLESS OTHERWISE SPECIFIED.</p> <p>8. ALL DIMENSIONS SHALL BE TO CENTER UNLESS OTHERWISE SPECIFIED.</p> <p>9. ALL DIMENSIONS SHALL BE TO CENTER UNLESS OTHERWISE SPECIFIED.</p> <p>10. ALL DIMENSIONS SHALL BE TO CENTER UNLESS OTHERWISE SPECIFIED.</p>	

Chandler Signs

2224 Peach Hwy. Memphis, TN 38124
248-995-1200 Fax 248-995-0494

12180 Blue Ridge, Ste 100 San Antonio, TX 78211
214-349-0244 Fax 214-349-0724

118 North Central, Ste 200 Little Rock, AR 72201
501-227-8277 Fax 501-227-8277

2004 Road 100, P.O. Box 1000 Knoxville, TN 37922
615-513-1100 Fax 615-513-1100

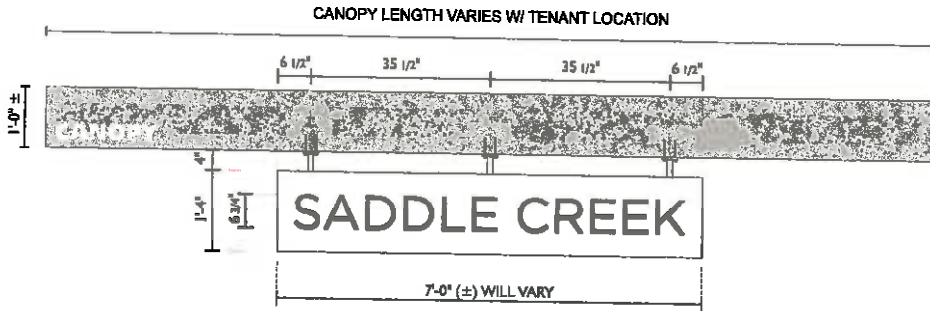
27 Woodland Blvd, Suite 100 Memphis, TN 38117
901-923-7862 Fax 901-923-7862

1401 S.W. 136th Ave, Suite 100 Fort Lauderdale, FL 33324
954-955-0799 Fax 954-955-0720

1000 West Center Blvd, Suite 100 Phoenix, AZ 85001
602-947-0981 Fax 602-947-0981

FINAL ELECTRICAL CONNECTION BY CUSTOMER

UL



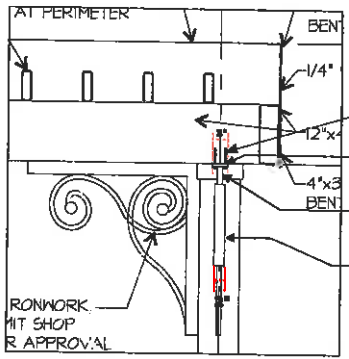
K ALUM. FCO. NON-LIT CANOPY MOUNTED 1/2"=1'-0"
9.33 SQ. FT.

ALUM. NON-LIT CHANNEL LETTERS, FACES & RETURNS PTD.
PER TENANTS LAYOUT

(COPY SHOWN FOR VISUAL PURPOSES ONLY)

CANOPY SIZES VARY PER TENANT LOCATION

NOTE:
ALL UNDER CANOPY SIGNS PER TENANT LAYOUT NOT TO EXCEED
10.00 SQ. FT., ALL FACES TO BE PAINTED ALUMINUM ONLY.



AAAAAAAAAAAAAAAAAAAAA
AA AAAAAAAAAAAAAAAAAA
AAAAAAAAAAAAAAAAAAAAA
AAAAAAAAA

- ATTACH TO CANOPY W/ NON CORROSIVE HARDWARE AS REQUIRED, PTD. PER TENANT LAYOUT.
- CENTRAL SIGN ATTACHED TO CANOPY W/ 1" SQ. PIPE & 3" MOUNTING PLATES AS REQUIRED PTD PER TENANT LAYOUT.
- CENTRAL SIGN ALUM. PANELS PTD PER TENANT LAYOUT.

SIDE VIEW NTS

13-1438 RB	
Sheet	24 of 25
SADDLE CREEK - PERMIT	
7609 POPLAR AVE. GERMANTOWN, TN 38138	
Act. No.	STAN MACRUM
Contractor	JAMIE MACRUM
Designer	P. AGUIAR
Date	11/16/13
Client	
Scale	
Estimating	
Asst	
Landlord	
Engineering	

PERMITS: LIMITED ALL BUILDING PERMITS & UNLICENSED TRADE SERVICES AREAS. SEPT OPTION 1. BEH IS ISSUED ANOTHER OPTION BEH FOR CUSTOMER'S REVIEW ONLY.

NOTICE: PERMIT REVIEW PER CUSTOMER PROVIDED PERMITS. INCLUDING CHANGING TRADE SERVICE SCHEDULES BEH IS NOT ALLOWED.

PERMITS: BEH HAS OBTAINED ALL OF THE NECESSARY PERMITS TO BE INSTALLED IN THE CITY OF MEMPHIS. A CHANGED PERMITSIVE WORKS SHALL BE DONE WITHIN THE CITY OF MEMPHIS AS PERMITTED BY THE CITY OF MEMPHIS. BEH SHALL BE RESPONSIBLE FOR OBTAINING ALL NECESSARY PERMITS TO BE DONE WITHIN THE CITY OF MEMPHIS.

PERMITS: BEH HAS OBTAINED ALL OF THE NECESSARY PERMITS TO BE INSTALLED IN THE CITY OF MEMPHIS. A CHANGED PERMITSIVE WORKS SHALL BE DONE WITHIN THE CITY OF MEMPHIS AS PERMITTED BY THE CITY OF MEMPHIS.

PERMITS: BEH HAS OBTAINED ALL OF THE NECESSARY PERMITS TO BE INSTALLED IN THE CITY OF MEMPHIS. A CHANGED PERMITSIVE WORKS SHALL BE DONE WITHIN THE CITY OF MEMPHIS AS PERMITTED BY THE CITY OF MEMPHIS.

PERMITS: BEH HAS OBTAINED ALL OF THE NECESSARY PERMITS TO BE INSTALLED IN THE CITY OF MEMPHIS. A CHANGED PERMITSIVE WORKS SHALL BE DONE WITHIN THE CITY OF MEMPHIS AS PERMITTED BY THE CITY OF MEMPHIS.

Chandler Signs

2300 Hwy 201 284-962-2000	India, TN 37034 Pdx 512-963-2941
2725 Blue Ridge, Box 209 510-520-2004	San Antonio, TX 78121 Pdx 210-519-9714
103 Sutter Avenue, Box 201 282-579-2878	Lehigh Valley, PA 18041 Pdx 610-412-8811
2004 Road 100 Public Circle 502-526-1100	Northwest, FL 32627 Pdx 352-412-1100
21 Woodloch Dr Dr West 800-961-2761	Memphis, TN 38114 Pdx 901-345-8734
Auto Max 515 284 Road West 812-520-2000	Portland, OR 97275 Pdx 503-452-9214
5111 Fort Center Drive, WEST 4 730-867-2000	Waco, TX 76781 Pdx 767-867-7333

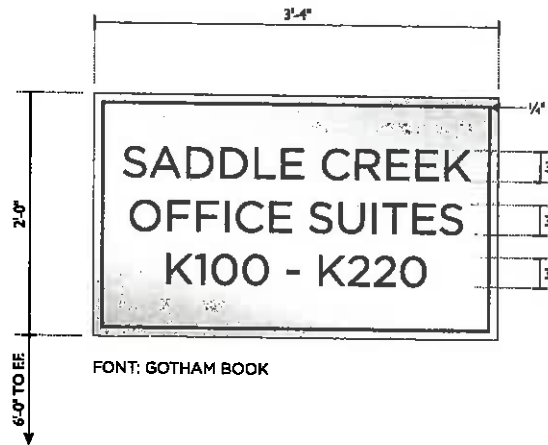
FINAL ELECTRICAL CONNECTION BY CUSTOMER



FONT: GOTHAM BOOK

L1-L2 BRUSHED S.S. LAMINATE PLAQUE (NON-ILLUM.) 1"=1'-0"
2 REQUIRED - MANUFACTURE & INSTALL. 6.6 SQ. FT. EA.

- BRUSHED STAINLESS STEEL LAMINATE OVER 1/2" THK. BLACK ACRYLIC
- ENGRAVED COPY & INSET BORDER - PAINT FILL BLACK
- ATTACHED TO WALL W/ NON-CORROSIVE HARDWARE & 1" SPACERS PTD TO MATCH WALL.
- SEAL ALL PENETRATIONS WATER TIGHT.
- ALL CORNERS TO BE SANDED SMOOTH.



FONT: GOTHAM BOOK


M1-M2 BRUSHED S.S. LAMINATE PLAQUE (NON-ILLUM.) 1"=1'-0"
2 REQUIRED - MANUFACTURE & INSTALL. 6.6 SQ. FT. EA.

- BRUSHED STAINLESS STEEL LAMINATE OVER 1/2" THK. BLACK ACRYLIC
- ENGRAVED COPY & INSET BORDER - PAINT FILL BLACK
- ATTACHED TO WALL W/ NON-CORROSIVE HARDWARE & 1" SPACERS PTD TO MATCH WALL.
- SEAL ALL PENETRATIONS WATER TIGHT.
- ALL CORNERS TO BE SANDED SMOOTH.



SURVEY NOTE

CONFIRM ALL COPY PRIOR TO MANUFACTURE
CONFIRM EXACT LOCATIONS OF SIGNS.


SADDLE CREEK

13-1438 RB

Sheet **25** of **25**

SADDLE CREEK - PERMIT

**7609 POPLAR AVE.
GERMANTOWN, TN
38138**

Asst. By: **STAN MACRUM**
 Checked: **JAMIE MACRUM**
 Designer: **P. AGUIAR**
 Date: **11/16/13**

Client: _____
 Sales: _____
 Estimating: _____
 Art: _____
 Layout: _____
 Engineering: _____

NOTATION: UPDATED ALL BUILDING ELEMENTS - INDICATED THAT SIGNAGE IS NOT PERMITTED IN THIS AREA UNLESS APPROVED BY THE CITY OF GERMANTOWN. ALL SIGNAGE MUST BE INSTALLED IN ACCORDANCE WITH THE CITY OF GERMANTOWN SIGNAGE ORDINANCE.

REVISIONS: 1. 11/16/13 - UPDATED ALL BUILDING ELEMENTS - INDICATED THAT SIGNAGE IS NOT PERMITTED IN THIS AREA UNLESS APPROVED BY THE CITY OF GERMANTOWN. ALL SIGNAGE MUST BE INSTALLED IN ACCORDANCE WITH THE CITY OF GERMANTOWN SIGNAGE ORDINANCE.

REVISIONS: 2. 11/16/13 - UPDATED ALL BUILDING ELEMENTS - INDICATED THAT SIGNAGE IS NOT PERMITTED IN THIS AREA UNLESS APPROVED BY THE CITY OF GERMANTOWN. ALL SIGNAGE MUST BE INSTALLED IN ACCORDANCE WITH THE CITY OF GERMANTOWN SIGNAGE ORDINANCE.

REVISIONS: 3. 11/16/13 - UPDATED ALL BUILDING ELEMENTS - INDICATED THAT SIGNAGE IS NOT PERMITTED IN THIS AREA UNLESS APPROVED BY THE CITY OF GERMANTOWN. ALL SIGNAGE MUST BE INSTALLED IN ACCORDANCE WITH THE CITY OF GERMANTOWN SIGNAGE ORDINANCE.

REVISIONS: 4. 11/16/13 - UPDATED ALL BUILDING ELEMENTS - INDICATED THAT SIGNAGE IS NOT PERMITTED IN THIS AREA UNLESS APPROVED BY THE CITY OF GERMANTOWN. ALL SIGNAGE MUST BE INSTALLED IN ACCORDANCE WITH THE CITY OF GERMANTOWN SIGNAGE ORDINANCE.

REVISIONS: 5. 11/16/13 - UPDATED ALL BUILDING ELEMENTS - INDICATED THAT SIGNAGE IS NOT PERMITTED IN THIS AREA UNLESS APPROVED BY THE CITY OF GERMANTOWN. ALL SIGNAGE MUST BE INSTALLED IN ACCORDANCE WITH THE CITY OF GERMANTOWN SIGNAGE ORDINANCE.

REVISIONS: 6. 11/16/13 - UPDATED ALL BUILDING ELEMENTS - INDICATED THAT SIGNAGE IS NOT PERMITTED IN THIS AREA UNLESS APPROVED BY THE CITY OF GERMANTOWN. ALL SIGNAGE MUST BE INSTALLED IN ACCORDANCE WITH THE CITY OF GERMANTOWN SIGNAGE ORDINANCE.

REVISIONS: 7. 11/16/13 - UPDATED ALL BUILDING ELEMENTS - INDICATED THAT SIGNAGE IS NOT PERMITTED IN THIS AREA UNLESS APPROVED BY THE CITY OF GERMANTOWN. ALL SIGNAGE MUST BE INSTALLED IN ACCORDANCE WITH THE CITY OF GERMANTOWN SIGNAGE ORDINANCE.

REVISIONS: 8. 11/16/13 - UPDATED ALL BUILDING ELEMENTS - INDICATED THAT SIGNAGE IS NOT PERMITTED IN THIS AREA UNLESS APPROVED BY THE CITY OF GERMANTOWN. ALL SIGNAGE MUST BE INSTALLED IN ACCORDANCE WITH THE CITY OF GERMANTOWN SIGNAGE ORDINANCE.

REVISIONS: 9. 11/16/13 - UPDATED ALL BUILDING ELEMENTS - INDICATED THAT SIGNAGE IS NOT PERMITTED IN THIS AREA UNLESS APPROVED BY THE CITY OF GERMANTOWN. ALL SIGNAGE MUST BE INSTALLED IN ACCORDANCE WITH THE CITY OF GERMANTOWN SIGNAGE ORDINANCE.

REVISIONS: 10. 11/16/13 - UPDATED ALL BUILDING ELEMENTS - INDICATED THAT SIGNAGE IS NOT PERMITTED IN THIS AREA UNLESS APPROVED BY THE CITY OF GERMANTOWN. ALL SIGNAGE MUST BE INSTALLED IN ACCORDANCE WITH THE CITY OF GERMANTOWN SIGNAGE ORDINANCE.

Chandler Signs

1381 Beaver Way Dallas, TX 75246
 314-982-3900 Fax 214-983-5444

4723 Elm Ridge, Ste 100 San Antonio, TX 78253
 314-982-3900 Fax 214-983-5444

882 South Austin, Ste 100 Louisville, KY 40201
 502-479-2877 Fax 502-432-9111

2504 Highway 101, Suite 100 Birmingham, AL 35217
 857-426-1118 Fax 857-426-1118

47 Waterfront Plaza Blvd Birmingham, AL 35214
 800-891-7982 Fax 214-944-4724

1401 S. Loop West, Suite 100 Houston, TX 77057
 281-982-3900 Fax 281-982-3900

1527 Park Center Drive, Suite 100 Houston, TX 77057
 281-982-3900 Fax 281-982-3900

FINAL ELECTRICAL CONNECTION BY CUSTOMER

MEMPHIS SIGN ERECTORS, INC.

P.O. BOX 18944
MEMPHIS, TN 38181-0944
PH: (901) 363-9119

TRIUMPH BANK
MEMPHIS, TN 38119

87-911-840

34744

7/2/2014

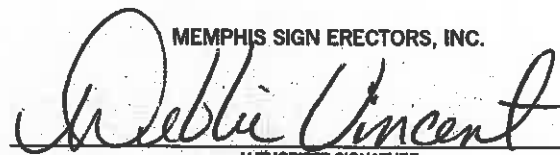
PAY TO THE ORDER OF City of Germantown

\$ ****120.00**

One Hundred Twenty and 00/100***** DOLLARS

City of Germantown

MEMPHIS SIGN ERECTORS, INC.



AUTHORIZED SIGNATURE

MEMO Saddle Creek South

⑈034744⑈ ⑆084009111⑆ 310002290⑈

MEMPHIS SIGN ERECTORS, INC.

City of Germantown
Date Type Reference
7/2/201 Bill permit

7/2/2014
Original A Balance Du Discou Payment
120.00 120.00 120.00
Check Amou 120.00

34744

Triumph Bank Saddle Creek South

120.00

Security features. Details on back.

