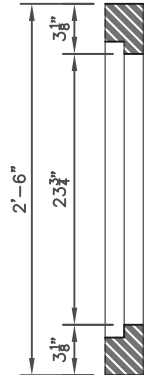
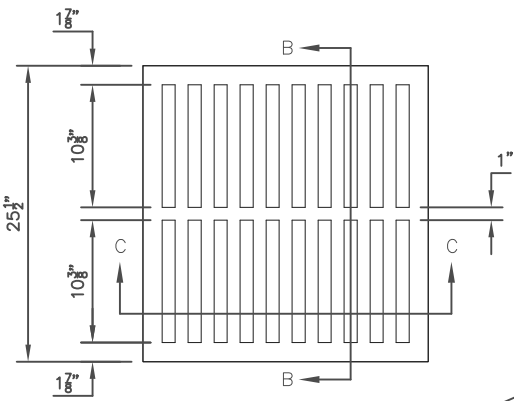
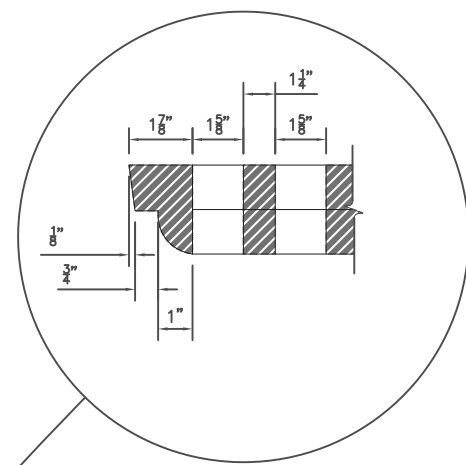


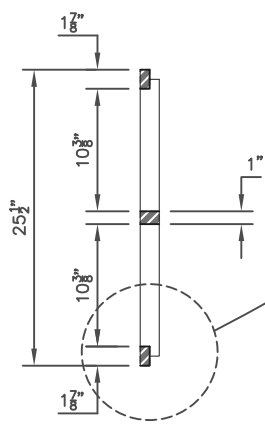
PLAN OF RIM



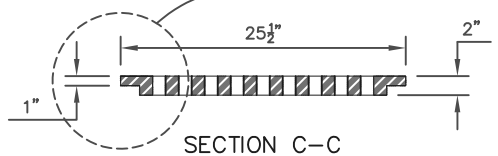
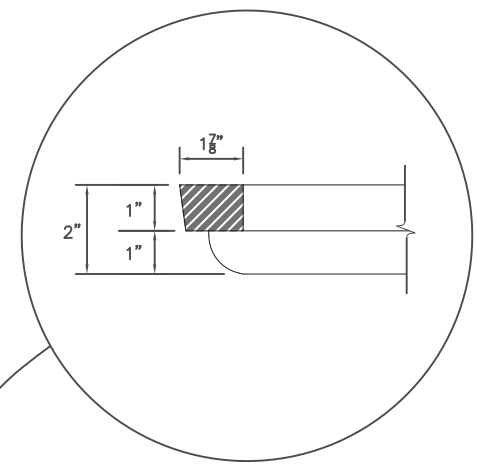
SECTION A-A



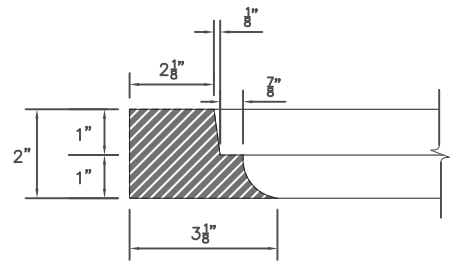
PLAN OF GRATE



SECTION B-B



SECTION C-C



RIM & GRATE SECTION

No. 10 RIM & GRATE

NOTES:

1. ALL PRECAST STRUCTURES MUST BE APPROVED BY THE CITY OF GERMANTOWN ENGINEERING DEPARTMENT PRIOR TO INSTALLATION OF STRUCTURE.
2. PRECAST TOPS SHALL BE SET IN PLACE USING A FULL MORTAR BED.
3. RIM & GRATE SHALL BE STANDARD No. 10 RIM & GRATE AS MANUFACTURED BY MEMPHIS MACHINE WORKS (OR APPROVED EQUAL).



ENGINEERING DEPARTMENT

No. 10 RIM & GRATE

DRAWN: MLC	DATE: 07.11.23
CHECKED: JDB	REVISED: _____
APPROVED: EWS	SCALE: NTS