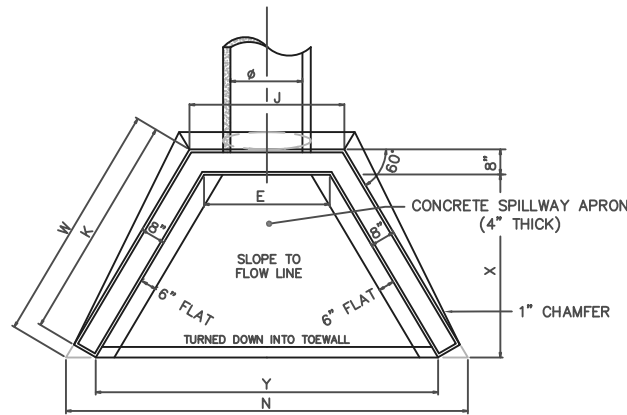
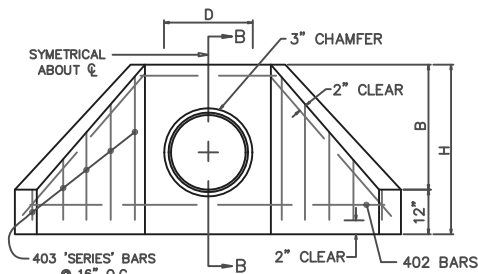


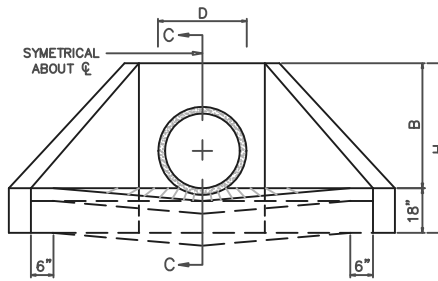
PLAN
(INLET)



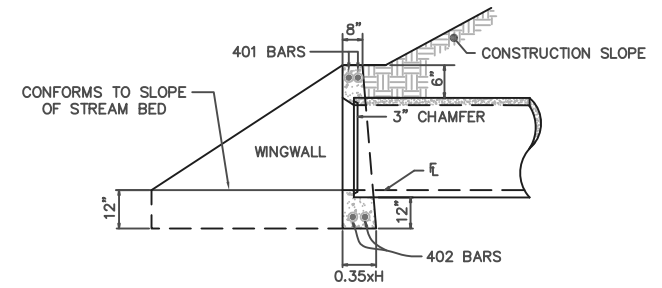
PLAN
(OUTLET)



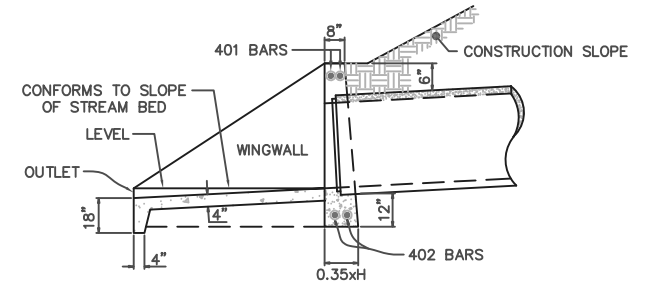
ELEVATION
(INLET)



ELEVATION
(OUTLET)

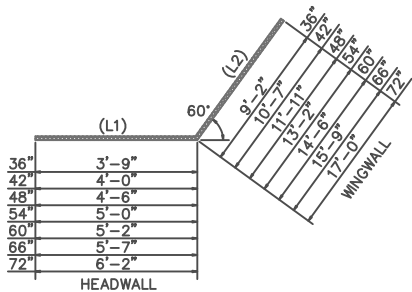


SECTION B-B



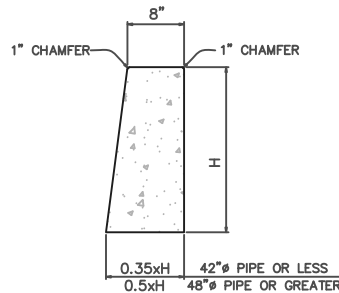
SECTION C-C

TYPE 'D' HEADWALL w/WINGWALLS



#401 & #402 BARS

NOTE: ALL REBAR SHALL BE NO. 4 BARS



SECTION A-A
(WINGWALL SECTION)

TABLE OF DIMENSIONS (2:1 CONSTRUCTION SLOPE)

Ø	15"Ø	18"Ø	21"Ø	24"Ø	30"Ø	36"Ø	42"Ø	48"Ø	54"Ø	60"Ø	66"Ø	72"Ø
B	1'-11½"	2'-2¼"	2'-5½"	2'-8½"	3'-3"	3'-9½"	4'-4"	4'-10½"	5'-5"	6'-0"	6'-6½"	7'-1"
D	1'-7½"	1'-10½"	2'-1½"	2'-5"	3'-0"	3'-7"	4'-2"	4'-9"	5'-4"	6'-0"	6'-7"	7'-2"
E	1'-9½"	2'-0½"	2'-3½"	2'-7"	3'-2"	3'-9"	4'-4"	4'-10"	5'-6"	6'-2"	6'-9"	7'-4"
H	3'-1½"	3'-4½"	3'-7½"	3'-11"	4'-6"	5'-1"	5'-8"	6'-3"	6'-10"	7'-6"	8'-1"	8'-8"
J	2'-7½"	2'-10½"	3'-1½"	3'-5½"	4'-0½"	4'-10½"	5'-2½"	5'-9½"	6'-4½"	7'-0½"	7'-7½"	8'-2½"
K	4'-10½"	5'-5½"	6'-0½"	6'-8½"	7'-11½"	9'-2½"	10'-5½"	11'-8½"	12'-11½"	14'-3½"	15'-6½"	16'-9½"
N	7'-11½"	8'-9½"	9'-7½"	10'-6½"	12'-4½"	14'-2½"	16'-0½"	17'-10½"	19'-8½"	21'-9½"	23'-7½"	25'-5½"
W	5'-3½"	5'-11"	6'-5½"	7'-1½"	8'-4½"	9'-7½"	10'-10½"	12'-1½"	13'-4½"	14'-8½"	15'-11½"	17'-2½"
X	3'-10½"	4'-4½"	4'-10½"	5'-5"	6'-6"	7'-7"	8'-8"	9'-9"	10'-10"	12'-0"	13'-1"	14'-2"
Y	6'-2½"	7'-1½"	7'-11"	8'-10½"	10'-8½"	12'-6½"	14'-4½"	16'-2½"	18'-0½"	20'-0½"	21'-10½"	23'-8½"

NOTES:

1. ALL PRECAST STRUCTURES MUST BE APPROVED BY THE CITY OF GERMANTOWN ENGINEERING DEPARTMENT PRIOR TO INSTALLATION OF STRUCTURE.
2. UNLESS OTHERWISE NOTED ON PLANS, CONCRETE SHALL BE CLASS A, 3500 psi READY MIX TYPE CONFORMING TO ASTM SPECIFICATION C94 AND COMPOSED OF PORTLAND CEMENT, SAND, AND WASHED COURSE LIMESTONE AGGREGATE.
3. ALL REINFORCING BARS SHALL BE No. 4 REBAR. REINFORCING BARS # 403 (SERIES BARS) VARY IN LENGTH. THE #403 BARS WILL BE SIZED AND CUT TO REQ'D DIMENSIONS IN THE FIELD AS NEEDED WHILE MAINTAINING THE 2" MINIMUM CLEAR DIMENSION AS SHOWN IN THESE DETAILS.



ENGINEERING DEPARTMENT

TYPE 'D' HEADWALL w/WINGWALLS

DRAWN: MLC DATE: 07.20.23
 CHECKED: JDB REVISED: _____
 APPROVED: EWS SCALE: NTS