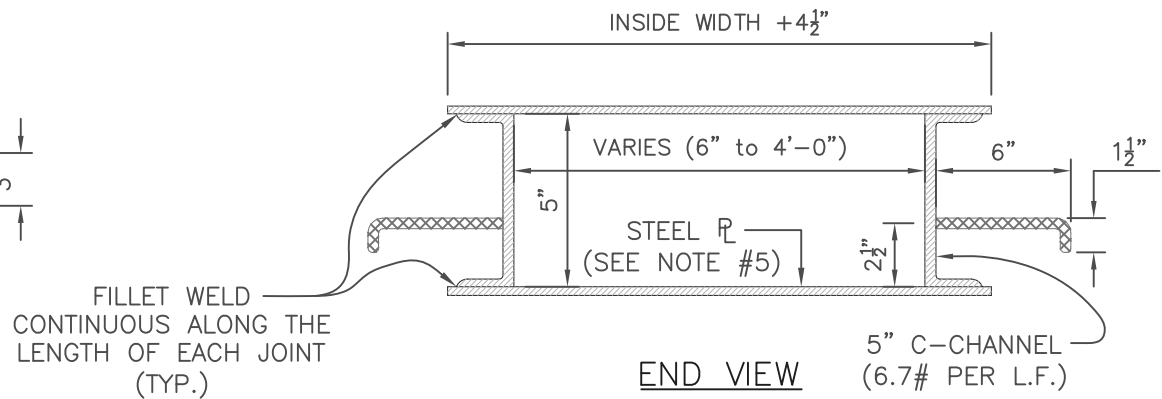
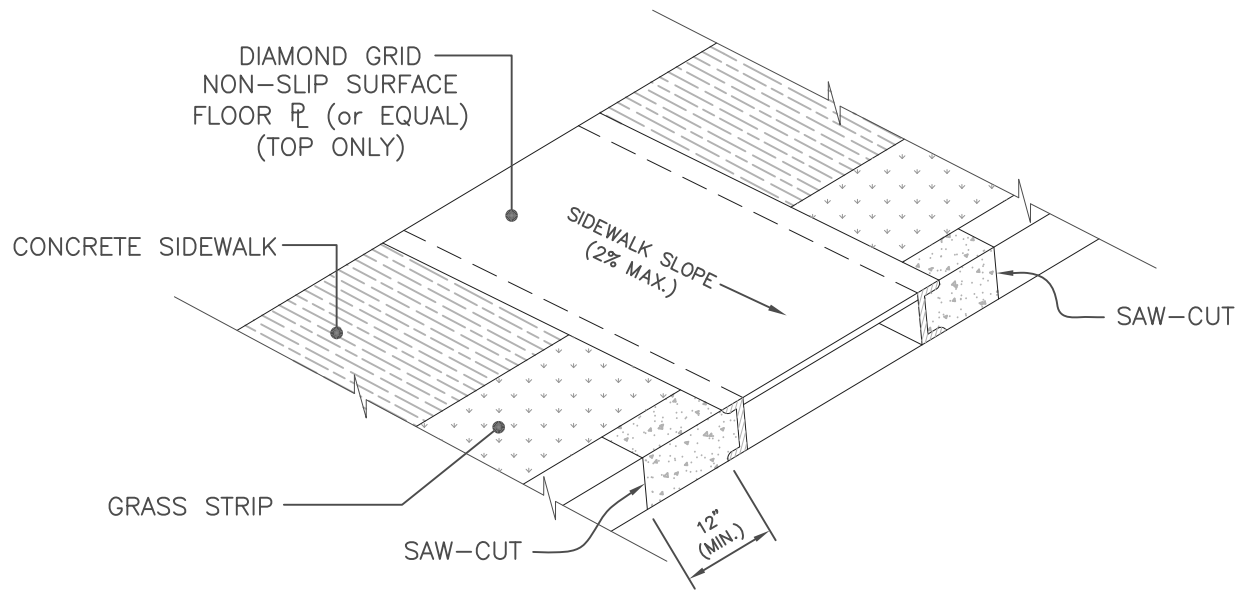


TOP VIEW



END VIEW



SIDEWALK - CURB DRAIN

NOTES:

1. CURB SHALL BE REMOVED AND REPLACED A MINIMUM OF TWELVE (12") INCHES PAST DRAIN OPENING. CURB AND SIDEWALK SHALL BE REMOVED TO NEAT LINES BY SAW-CUTTING (NO EXCEPTIONS).
2. UNLESS OTHERWISE NOTED ON PLANS, CONCRETE SHALL BE CLASS A, 3500 PSI READY MIX TYPE CONFORMING TO ASTM SPECIFICATION C94 AND COMPOSED OF PORTLAND CEMENT, SAND, AND WASHED COURSE LIMESTONE AGGREGATE. AIR-ENTRAINMENT SHALL BE 5%, ($\pm 2\%$).
3. OPENING SIZE SHALL BE DETERMINED BY THE AMOUNT OF STORM FLOW TO BE EXPECTED. AN ENGINEERING STUDY (PROVIDED BY INSTALLER) SHALL BE AVAILABLE UPON REQUEST.
4. ALL SIDEWALK/CURB DRAINS SHALL BE PRE-APPROVED BY THE CITY OF GERMANTOWN ENGINEERING DEPARTMENT.
5. STEEL PLATE THICKNESS: CURB DRAIN OPENINGS 6" TO 1'-11 7/8" (WIDTH) SHALL BE 1/4" R STEEL. CURB DRAIN OPENINGS 2'-0" TO 4'-0" (WIDTH) SHALL BE 3/8" R STEEL.



ENGINEERING DEPARTMENT

SIDEWALK - CURB DRAIN

DRAWN: MLC

DATE: 08.07.23

CHECKED: JDB

REVISED: _____

APPROVED: EWS

SCALE: NTS