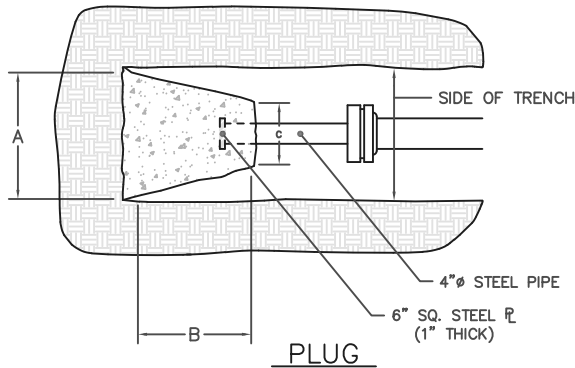
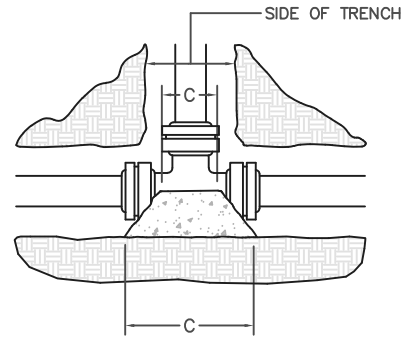


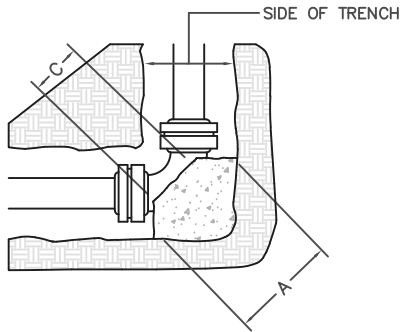
TYPICAL SECTION



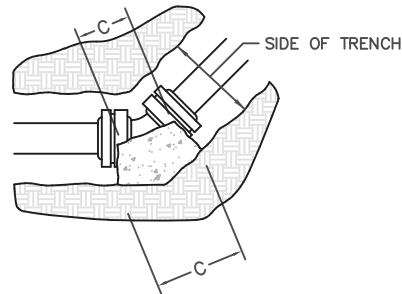
PLUG



TEE



90° BEND



45°, 22½° & 11¼° BENDS

90° BEND							
SIZE	2"	4"	6"	8"	10"	12"	18"
A	16"	16"	26"	33"	40"	50"	70"
B	16"	16"	24"	33"	40"	50"	70"
C	9"	9"	12"	12"	15"	16"	22"
D	8"	8"	12"	16"	20"	25"	24"

45° BEND							
SIZE	2"	4"	6"	8"	10"	12"	18"
A	12"	12"	18"	24"	31"	37"	52"
B	12"	12"	18"	24"	31"	37"	52"
C	8"	8"	10"	12"	14"	16"	14"
D	6"	6"	9"	12"	15"	18"	18"

22½° BEND							
SIZE	2"	4"	6"	8"	10"	12"	18"
A	9"	9"	13"	18"	23"	26"	40"
B	9"	9"	13"	18"	23"	26"	40"
C	8"	8"	10"	12"	14"	16"	15"
D	4"	4"	6"	9"	11"	13"	16"

11¼° BEND							
SIZE	2"	4"	6"	8"	10"	12"	18"
A	9"	9"	11"	13"	16"	18"	30"
B	9"	9"	11"	13"	16"	18"	30"
C	8"	8"	10"	12"	14"	16"	15"
D	4"	4"	5"	6"	8"	9"	16"

SCHEDULE FOR THRUST BLOCK AREAS						
PIPE SIZE (INCHES)	90 BEND (FT²)	45 BEND (FT²)	22½ BEND (FT²)	11¼ BEND (FT²)	TEE & PLUG (FT²)	DESIGN PRESS (PSI)
4" AND SMALLER	0.5	0.5	0.5	0.5	0.5	100
6"	0.8	0.5	0.5	0.5	1.1	100
8"	1.4	0.8	0.5	0.5	2.0	100
10"	2.2	1.2	0.5	0.5	3.1	100
12"	3.2	1.8	0.9	0.5	4.5	100

NOTE: THRUST BLOCK AREAS COMPUTED ON BASIS OF 2500 POUNDS/FT² SOIL RESISTANCE BEARING

PLUG							
SIZE	2"	4"	6"	8"	10"	12"	18"
A	26"	26"	26"	34"	43"	52"	70"
B	26"	26"	26"	34"	43"	52"	70"
C	12"	12"	12"	12"	12"	12"	30"
D	11"	11"	11"	15"	22"	32"	32"

TEE							
SIZE	2"-6"	8"-12"	8"-10"	12"	12"	12"	12"
MAIN	2"-6"	8"-12"	8"-10"	12"	12"	12"	12"
BRANCH	2"-6"	2"-6"	8"-10"	2"-6"	8"-10"	12"	16"-18"
A	26"	26"	43"	26"	43"	52"	70"
B	26"	26"	43"	26"	43"	52"	70"
C	12"	12"	12"	12"	12"	12"	30"
D	13"	13"	21"	13"	21"	26"	24"

THRUST BLOCK TYPICAL DETAIL

NOTES:

- THRUST BLOCK BEARING AREAS SHALL BE POURED AGAINST UNDISTURBED MATERIAL. WHERE TRENCH WALL HAS BEEN DISTURBED, EXCAVATE ALL LOOSE MATERIAL AND EXTEND TO TO UNDISTURBED MATERIAL
- EXTEND THRUST BLOCK FULL LENGTH OF FITTINGS. PLACE BOARD IN FRONT OF ANY PLUGS BEFORE PLACING CONCRETE. JOINTS SHALL NOT BE COVERED BY THRUST BLOCK.
- ALL FITTINGS SHALL BE WRAPPED IN PLASTIC PRIOR TO PLACEMENT OF CONCRETE.
- CONCRETE SHALL BE CLASS A, 3500 PSI READY MIX TYPE CONFORMING TO ASTM SPECIFICATION C94 AND COMPOSED OF PORTLAND CEMENT, SAND, AND WASHED COURSE LIMESTONE AGGREGATE.
- ROUGH BLOCKING FORMS SHALL BE BE USED ALONG SIDES OF THRUST BLOCKS.
- THRUST BLOCKS SHALL BE USED IN COMBINATION TO SUIT THE SPECIFIC FITTING ARRANGEMENT AS REQUIRED.



ENGINEERING DEPARTMENT

THRUST BLOCK TYPICAL DETAIL

DRAWN: MLC
 CHECKED: JDB
 APPROVED: EWS

DATE: 06.19.23
 REVISED: _____
 SCALE: NTS